

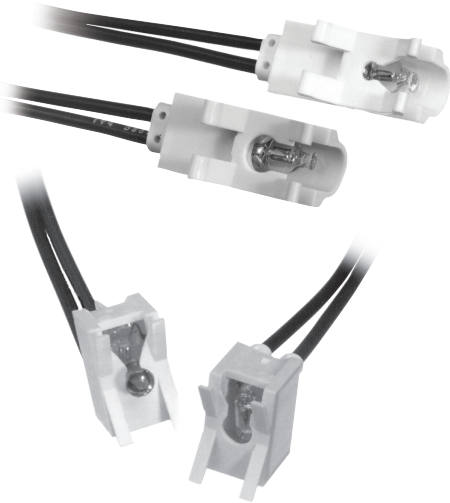
Series 10, 60

Features

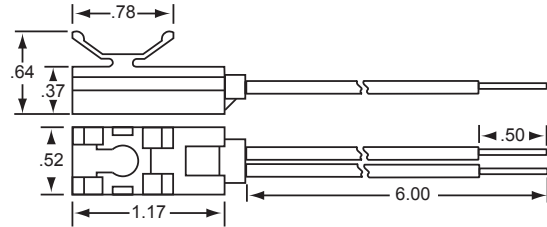
- Lens mounts from front, indicator from behind panel
- Incandescent and neon illumination
- 10 Series has wire leads only
- 60 Series available with wire leads or tab terminals

Specifications

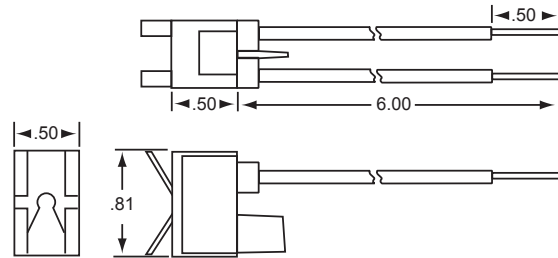
- Body Material: Nylon
- Lens Material: Polycarbonate
- Wire Gauge: Series 10 - 20 ga
Series 60 - 18 ga
- Wire Strip: 1/2"
- Terminals: .187 Tabs
or .250 Tabs
- Panel Thickness: .030 - .780"
- Certifications: Contact Us



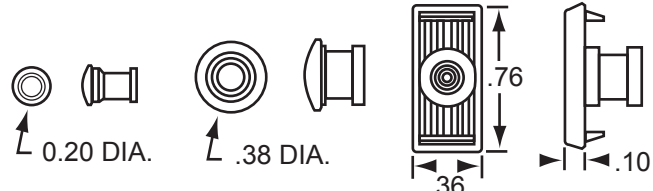
10 Series



60 Series

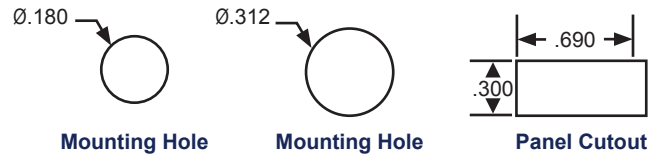


Series	Lamp		Termination		Base		Bezel		Lens				
XX	XX		X		X		X		XXX	X	0		
	Voltage	Type	Code	Style	Code	Color	Code	Finish	Code	Style	Code	Color	Code
10	6	INCAND	32	6" Wire	1	N/A	0	N/A	0	.200 Dia Rings	496	N/A	0
60	14	INCAND	35	.187 Tabs ³	3					.375 Dia Rings	266	Red	1
	28	INCAND	39	.250 Tabs ³	4					Rectangular Lines	515	Amber	2
	125	NEON	50	Special	X					No Lens ¹	490	Clear	3
	250	NEON	52							No Lens ¹	260	Green	4
										No Lens ¹	510	Blue	5



Lens 49 Lens 26 Lens 51

- Lens 49 mounting hole .180" dia
- Lens 26 mounting hole .312" dia.
- Lens 51 mounting hole .690" x .300"



Mounting Hole Mounting Hole Panel Cutout

Additional Options Available:

Contact Factory

1. If Ordered without lens, lens style must still be specified, Pattern and color are "0"
2. Nominal range. Alternate lenses (style 26) are available to fit thicker panels. Please consult factory
3. Series 60 only

Rear Mount Indicators