

Introducing

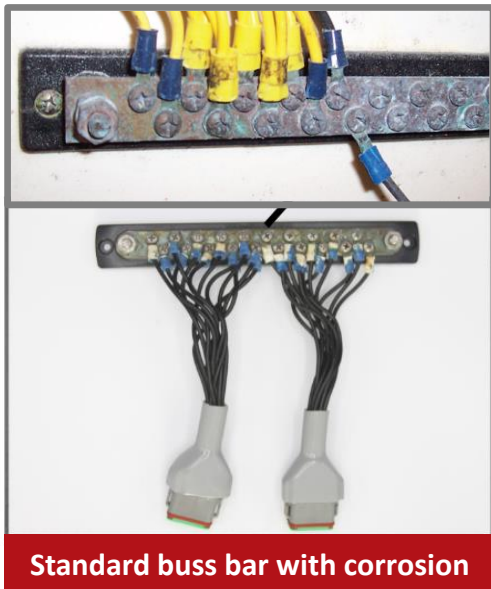


Sealed Buss Bar Products



Off Road Equipment · Industrial · Emergency Vehicle · Off Road Vehicles · Marine · Alternative Energy

The Best Protection for Your Electrical System



- Eliminates every exposed crimp and terminal that could be a potential failure.
- Maintenance free plug and play design installs in seconds
- Conductive Copper completely over molded for environmental protection.

What is a Buss Bar?



A **buss bar** is a metallic strip or bar, typically used for local high current power distribution

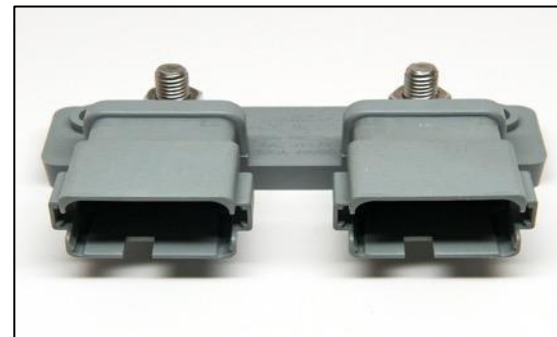
Solico sealed buss bar vs traditional designs:

- Innovative design eliminates corrosion
- Installation and maintenance costs reduced 50%+
- Plug and play vs time consuming install connections
- Connection stays as secure as date installed (No loose screws)



Buss bar must resist:

- Mechanical vibrations (earthquake)
- Accumulated precipitation
- Thermal expansion
- Temperature variations
- Magnetic induction from large currents

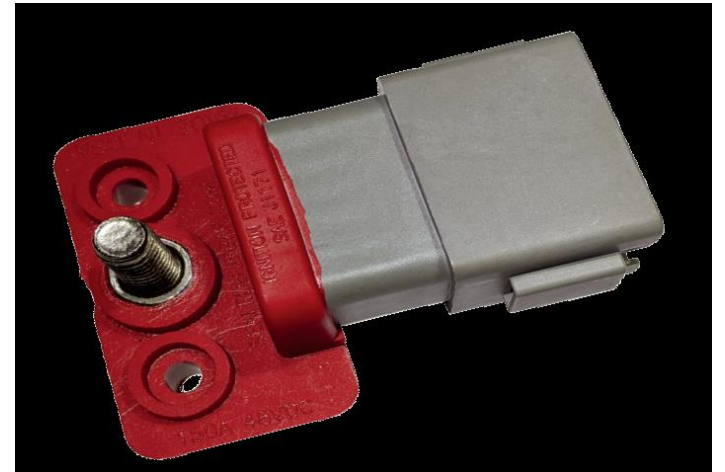


Compact Design Exceeds or Meets Standards



- ✓ Meets or exceeds standards for Coast Guard, ABYC, and NMMA.
- ✓ Meets ignition protection requirements of NMMA / ISO 8846 / USCG / SAE J1171 standards.

- Operated 50 on-off-on cycles in explosive atmosphere
- Percent of Propane in air surrounding Sealed Bus Bar (4.8% exceeding the 4.75% requirement)
- No leakage when submerged 15 inches under water surface @50 C
- High Temperature test (200 C) never detected on exterior surface.
- Ambient temperature 60 C / Highest temperature indicated 87 C



Did You Know?



Ratings

- Single connector for 150 amps @ 48VDC
- Dual connectors rated to 300 AMPS @ 48VDC
- Each contact rated for 13A continuous
- Contacts and studs are connected internally on SBB-24 and SBC-24
- SBC2-12 internally isolated the stud behind each connector is bonded to connector

Dust Tight & Water Resistant

- IP67 dust tight and water resistant to 1 meter
- IP 68 achievable with addition of boot to the connectors (Deutsch part # DT12S-BT or equivalent.)

Protected from Corrosion

- Main conducting plate C1100 Electrolytic Copper and is fully encapsulated
- Corrosion resistant, durable, excellent mechanical strength and conductivity
- Resists environmental degradation

Did You Know?



High Voltage Usage

- Carries high voltage power (Up to 48VDC)
- Sufficiently rigid to support its own weight
- Disperses heat efficiently

Power Circuits Usage

- Proper circuit protection on the smaller wires must be used to prevent short circuits and other hazards

Hardware

- Each stud supplied with 5/16-18 stainless serrated flange nut
- Torque 132inlb (14.9Nm)

Mounting Hardware

- #10 Pan Head required
- Avoid oval and flathead mounting hardware
- Mounting Torque 20inlb (2.4Nm)

Advantages

- Vibration spec is 20 g's at 10-2000 Hz (no screws to vibrate)
- Gathers multiple wires for electrical distribution; No more than 4 wires per stud.
- Eliminates wiring errors using connectors
- Save space compared to cable system

Sealed Buss Bars plugs into connectors

Amphenol® AT06-12SA & B (SBC Series) recommended

- Deutsch® DT06-12SA & B (SBB series)
- TE Connectivity® 93445 6212 & 93445 6221
 - Connectors that plug into buss bars are rated for 18 AWG through to 14 AWG
 - Ring terminals size 5/16 (M8) crimped on the end of the cable through 4/0 (0000) wire size



Transportation

Industrial



- Marine
- Emergency Vehicles, Fire Trucks, Ambulances
- Busses, RV's,
- Transportation Equipment manufacturer
- Electric Vehicles
- ATV / Utility Vehicles

- Motor Starters and Controls
- Generators
- Heating and Cooling controls
- Welding Equipment
- Surge protectors
- Dispensing Equipment
- Pool and Spa Equipment
- Factory Automation



- Gas and Electrical Utilities
- Thermal Management
- Portable Heaters, Fans
- Pressure Washers, Air filtration
- Furnaces, Gas fired heaters
- Commercial cooling systems
- Control Panels
- Refrigeration and Drying systems

- Renewable Energy
 - Wind
 - Solar
- Generators
- Pump Controls
- Power Transmissions
- Lawn and Garden
- Aviation- ground support
- Agricultural Equipment
- Construction Equipment
- Aftermarket

Thank You for Your Time



Solico looks forward to fulfilling your requirements.

- Sorenson Lighted Controls (Solico) located in West Hartford Ct is a privately owned company with 50+ years is now expanding to Sealed Buss Bar Market and remove every crimp, terminal, and bend that lurks as a potential failure point in your assembly.
- Solico history of *producing lighting assemblies and a wide variety of indicator lights* utilizing neon, incandescent and LED lamps for a variety of markets and countless applications.
- Solico also offers *multiple value-added services* such as custom wire length with various connector options, legends, and custom diodes for reverse polarity.