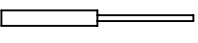
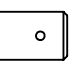
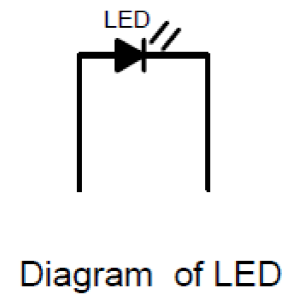


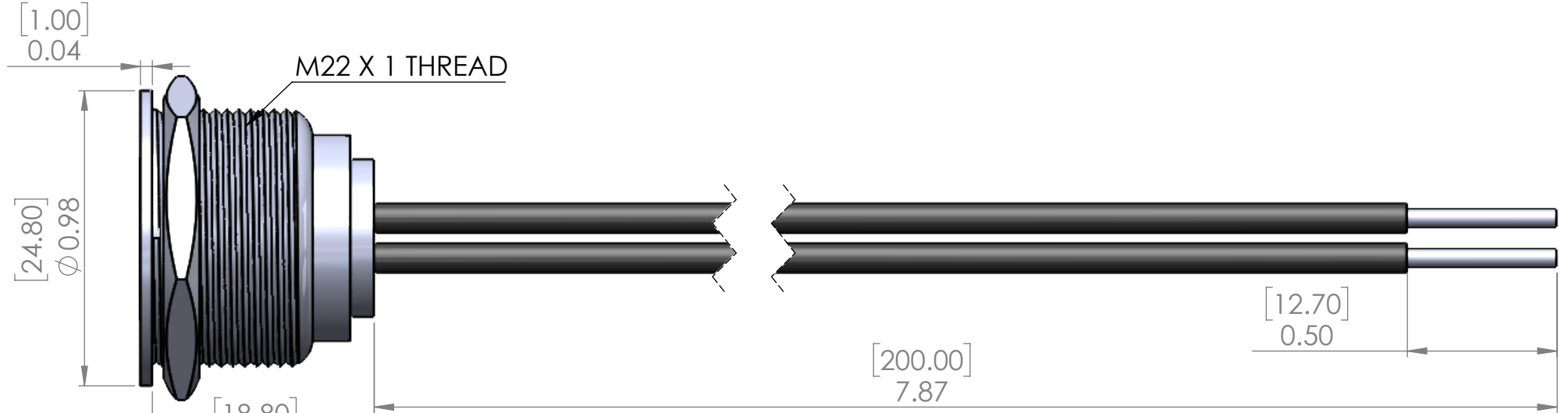
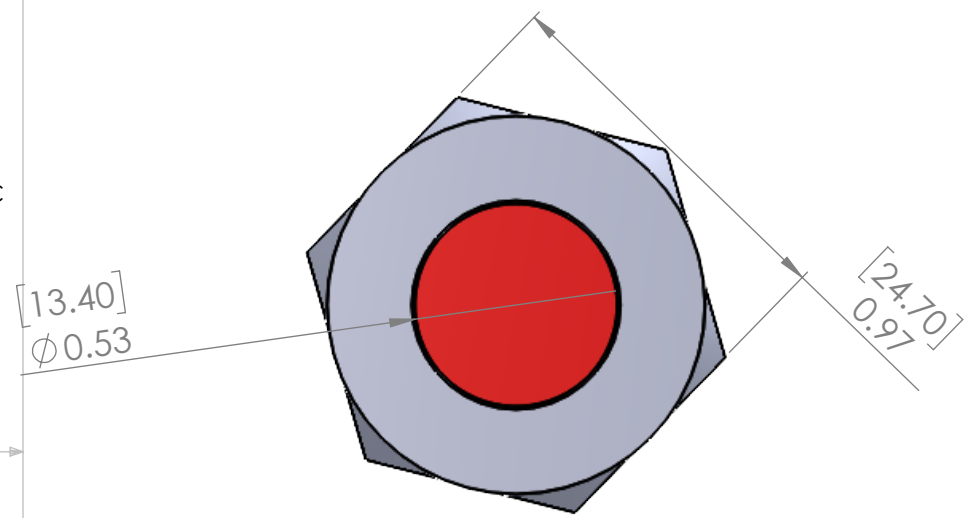
THIS DRAWING AND DIMENSIONS PROVIDED FOR REFERENCE ONLY.

DWG NO.	SERIES BR	REV.
		A

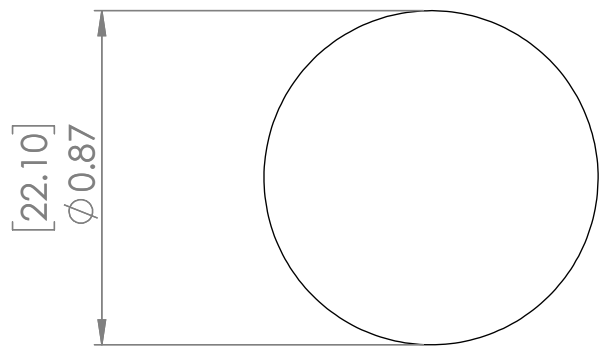
TERMINATION		
Style	Code	Specifications
	1	Rear Apoxy Wire
	5	Solder lug/fastons (2.8 x 0.8)



REV.	DESCRIPTION	DATE	APPROVED
A	INITIAL RELEASE	3/25/22	JAKE JANOSO



PANEL THICKNESS RANGE:  
.039-.393" (1-10 mm)



MOUNTING HOLE

\*Mounting Hole Dimensions shown are TYPICAL.  
Customer is responsible for determining  
final size based on panel material and thickness

**Technical Notes:**

- Nut Torque: 2-14 N\*m;
- Protection Grade: IP68 IK10;
- Material: Stainless Steel 304, Black Plating;
- Product name: LED Indicator Light;
- Lamp Voltage: 3-250 VDC/AC
- Rating: 12 VDC MAX;
- Dielectrical Life: more than 100,000 hours
- Operating Temperature: -40 - 70°C/-40 - 70°F
- Storage Temperature: -40 - 70°C/-40 - 70°F
- Operating Humidity: 10-90%
- Connection Type: Cable;
- Base Material: PC
- Certification: Compliance with ROHS requirement



SOLICO PART NUMBER		TITLE	
		CATALOG DRAWING	
SORENSEN LIGHTED CONTROLS, INC. 100 Shield Street - West Hartford, CT 06110		SIZE	REV
PROPRIETARY NOTICE		<b>B</b>	<b>A</b>
UNSPECIFIED TOLERANCES		DWG. NO. SERIES BR-22MM	
TOOL NO.		SHEET 1 OF 1	
DRAWN JAJ DATE 3/25/22		USED ON	
CHECKED DATE		2:1	
APVD DATE			
PROJECTIONS DIMENSIONS			
IN (mm)			