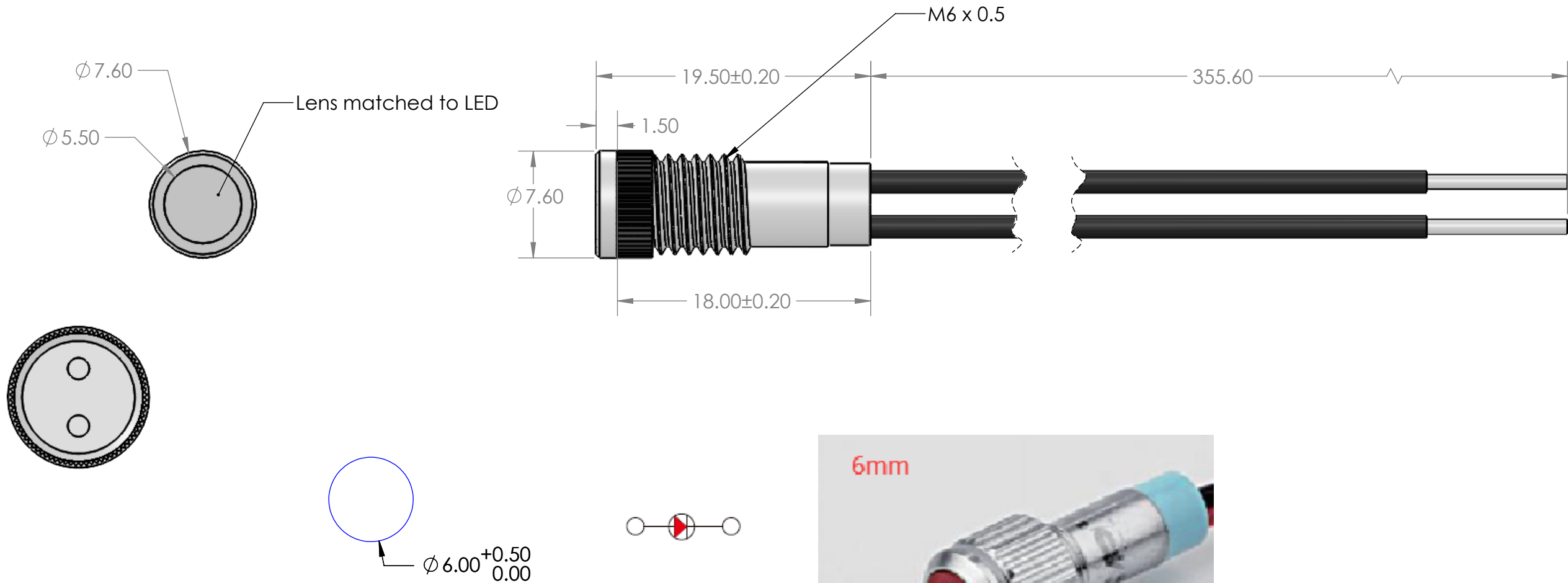


THIS DRAWING AND DIMENSIONS PROVIDED FOR REFERENCE ONLY.

REVISIONS				
ZONE	REV.	DESCRIPTION	DATE	APPROVED
	A	INITIAL RELEASE	3/15/2024	JAKE JANOSO



PANEL MOUNTING

Circuit Diagram
Single Color



Technical Notes:

Lamp Voltage: 3-250VAC/DC
Dielectrical Withstanding Voltage: 1100VAC For 1 Minute
Operating Life: 40,000 Hours
Function: Indicator Light;
Operating Temperature: -20 - 80°C
Protection Grade: IP67 IK10;
Connection Type: Wire Harness with Molex Contact Connector

Material:

Base Material: EP
Lamp Shade Material: PC
Case Material: Stainless Steel

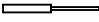
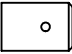
*Mounting Hole Dimensions shown are TYPICAL.
Customer is responsible for determining
final size based on panel material and thickness

PROPRIETARY NOTICE		UNSPECIFIED TOLERANCES		TOOL NO.		TITLE	
NOTICE TO ALL PERSONS RECEIVING THIS DRAWING. THIS DOCUMENT IS THE SOLE PROPERTY OF SORENSON LIGHTED CONTROLS, INC. AND IS NOT TO BE DISCLOSED, REPRODUCED IN WHOLE OR IN PART, OR USED FOR ANY MANUFACTURING PURPOSES BY ANYONE WITHOUT THE EXPRESS CONSENT OF SORENSON LIGHTED CONTROLS, INC.		FRAC. $\pm 1/64$ X.XX ± 0.01		X.XXX ± 0.005 ANGLES $\pm 1^\circ$		CUSTOMER DRAWING	
		PROJECTIONS		DIMENSIONS		SIZE	DWG. NO.
				mm		B	BR SERIES-6 MM
						USED ON	SCALE
							3:1
						SHEET 1 OF 1	



SORENSON LIGHTED CONTROLS, INC.
100 Shield Street - West Hartford, CT 06110

TITLE			
CUSTOMER DRAWING			
SIZE	DWG. NO.	REV	
B	BR SERIES-6 MM	A	
USED ON		SCALE	SHEET 1 OF 1
		3:1	

TERMINATION		
Style	Code	Specifications
	1	Rear Apoxy Wire
	5	Solder lug/fastons (2.8 x 0.8)

THIS DRAWING AND DIMENSIONS PROVIDED FOR REFERENCE ONLY.

REVISIONS				
ZONE	REV.	DESCRIPTION	DATE	APPROVED
	A	INITIAL RELEASE	2/22/2023	JAKE JANOSO

D

D

C

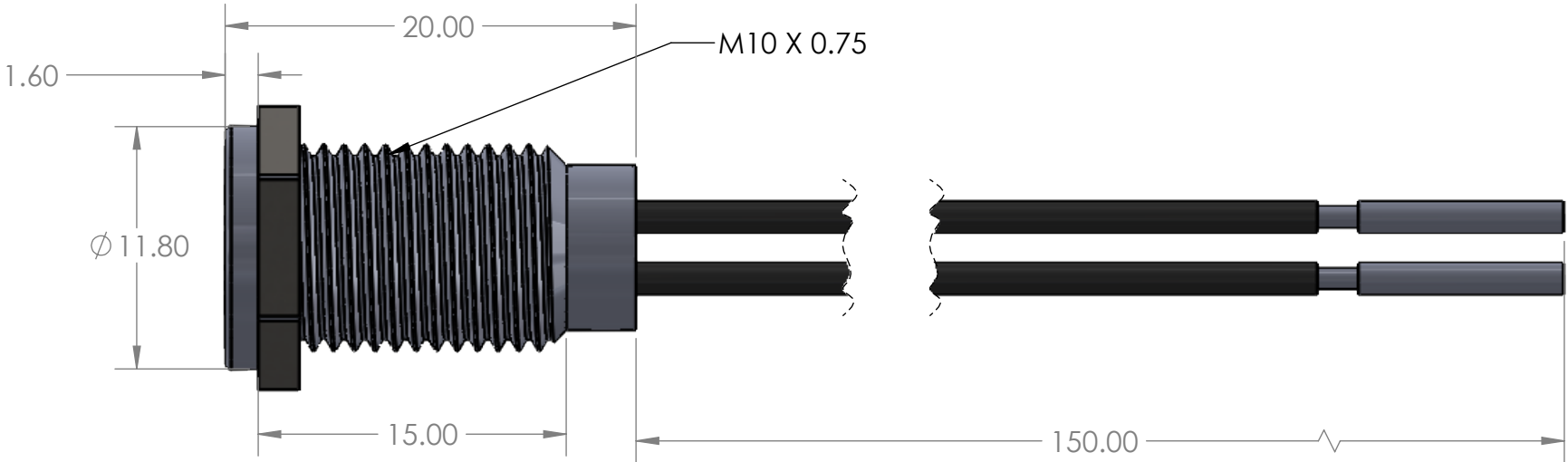
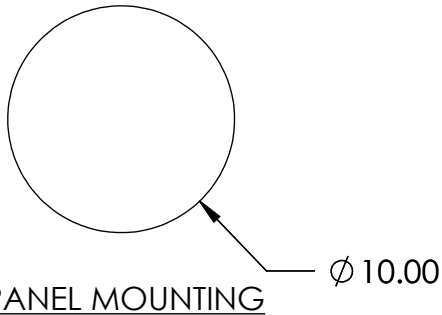
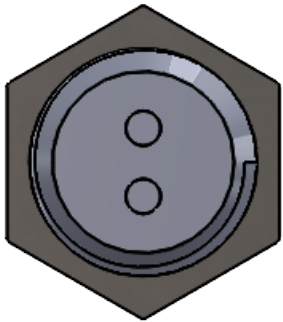
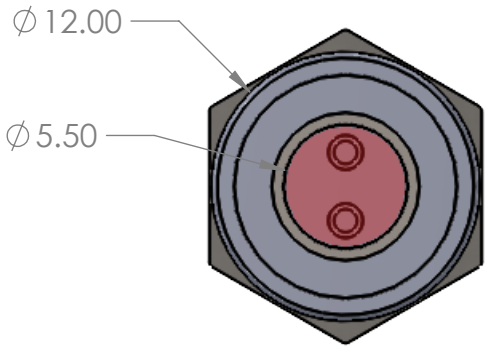
C

B

B

A

A



Circuit Diagram
Single Color



Technical Notes:
Lamp Voltage: 3-250VAC/DC
Rating: 20mA 250VDC;
Dielectrical Withstanding Voltage: 1100VAC For 1 Minute
Operating Life: 40,000 Hours
Function: Indicator Light;
Operating Temperature: -20 - 70°C
Protection Grade: IP67 IK10;
Connection Type: Wire Harness

Material:
Base Material: EP
Lamp Shade Material: PC
Case Material: Stainless Steel

*Mounting Hole Dimensions shown are TYPICAL.
Customer is responsible for determining
final size based on panel material and thickness

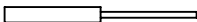
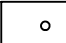
<div>PROPRIETARY NOTICE</div> <div>NOTICE TO ALL PERSONS RECEIVING THIS DRAWING. THIS DOCUMENT IS THE SOLE PROPERTY OF SORENSON LIGHTED CONTROLS, INC. AND IS NOT TO BE DISCLOSED, REPRODUCED IN WHOLE OR IN PART, OR USED FOR ANY MANUFACTURING PURPOSES BY ANYONE WITHOUT THE EXPRESS CONSENT OF SORENSON LIGHTED CONTROLS, INC.</div>	<div>UNSPECIFIED TOLERANCES</div> <div>FRAC. ±1/64X.XX ±0.01</div> <div>X.XXX ±0.005ANGLES ±1°</div>		TOOL NO.		TITLE CUSTOMER DRAWING									
			DRAWN JAJ					DATE 2/21/23						
			CHECKED		DATE		SIZE B		DWG. NO. BR SERIES-10 MM		REV A			
	PROJECTIONS		DIMENSIONS		APVD		DATE		USED ON		SCALE 3:1		SHEET 1 OF 1	
			mm											



SORENSON LIGHTED CONTROLS, INC.
100 Shield Street - West Hartford, CT 06110

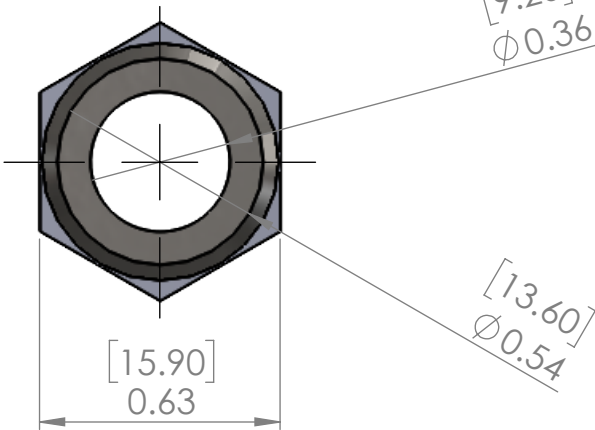
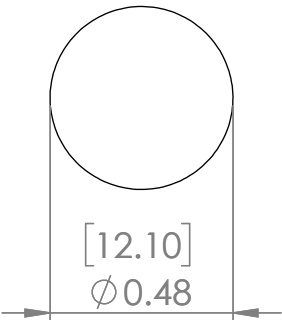
THIS DRAWING AND DIMENSIONS PROVIDED FOR REFERENCE ONLY.

DWG NO. SERIES BR REV. A

TERMINATION		
Style	Code	Specifications
	1	Rear Apoxy Wire
	5	Solder lug/fastons (2.8 x 0.8)

REV.	DESCRIPTION	DATE	APPROVED
A	INITIAL RELEASE	3/23/22	JAKE JANOSO
B	UPDATED DIMENSIONS AND PART INFO	5/4/22	JAKE JANOSO

MOUNTING HOLE



PANEL THICKNESS RANGE:
.039-.393" (1-10 mm)

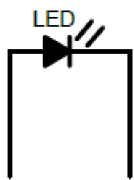
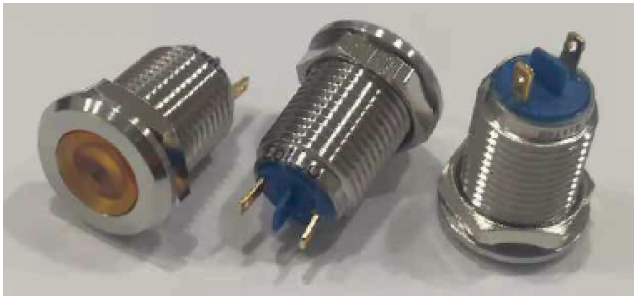
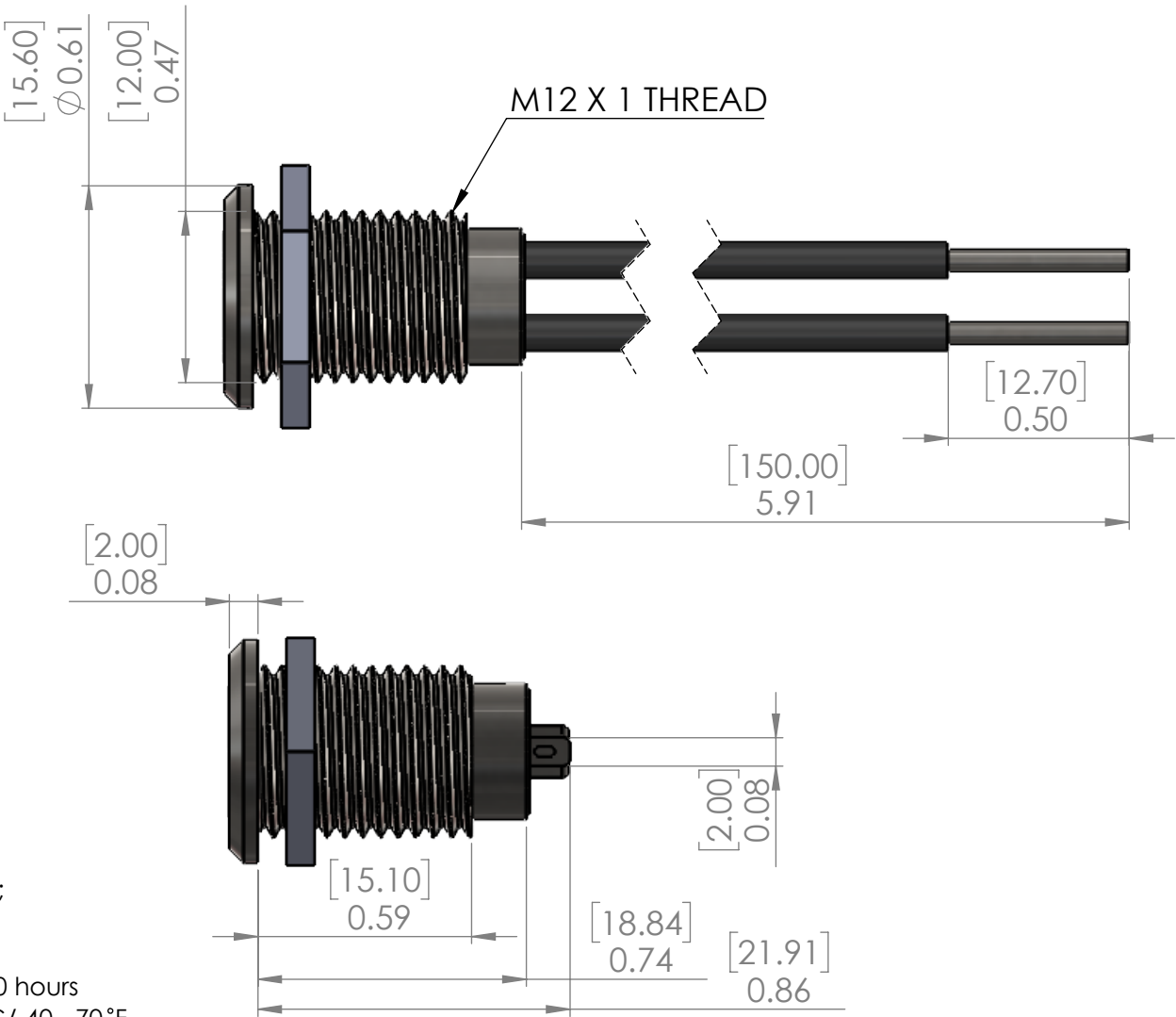


Diagram of LED



Technical Notes:

Nut Torque: 2-14 N*m;
Protection Grade: IP68 IK10;
Material: Stainless Steel 30;
Product name: LED Indicator Light;
Lamp Voltage: 3-250 VDC/AC
Rating: 20mA 250VDC MAX;
Dielectrical Life: more than 100,000 hours
Operating Temperature: -40 - 70°C/-40 - 70°F
Storage Temperature: -40 - 70°C/-40 - 70°F
Operating Humidity: 10-90%
Connection Type: Pin Connection;
Base Material: PA66
Certification: Compliance with ROHS requirement



*Mounting Hole Dimensions shown are TYPICAL.
Customer is responsible for determining
final size based on panel material and thickness

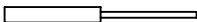

SOLICO PART NUMBER

PROPRIETARY NOTICE		UNSPECIFIED TOLERANCES		TOOL NO.	
NOTICE TO ALL PERSONS RECEIVING THIS DRAWING, THIS DOCUMENT IS THE SOLE PROPERTY OF SORENSON LIGHTED CONTROLS, INC. AND IS NOT TO BE DISCLOSED, REPRODUCED IN WHOLE OR IN PART, OR USED FOR ANY MANUFACTURING PURPOSES BY ANYONE WITHOUT THE EXPRESS CONSENT OF SORENSON LIGHTED CONTROLS, INC.		FRAC. ±1/64		DRAWN	DATE
		X.XX ±0.01		CHECKED	DATE
		X.XXX ±0.005		APVD	DATE
PROJECTIONS		DIMENSIONS			
					
		IN (mm)			

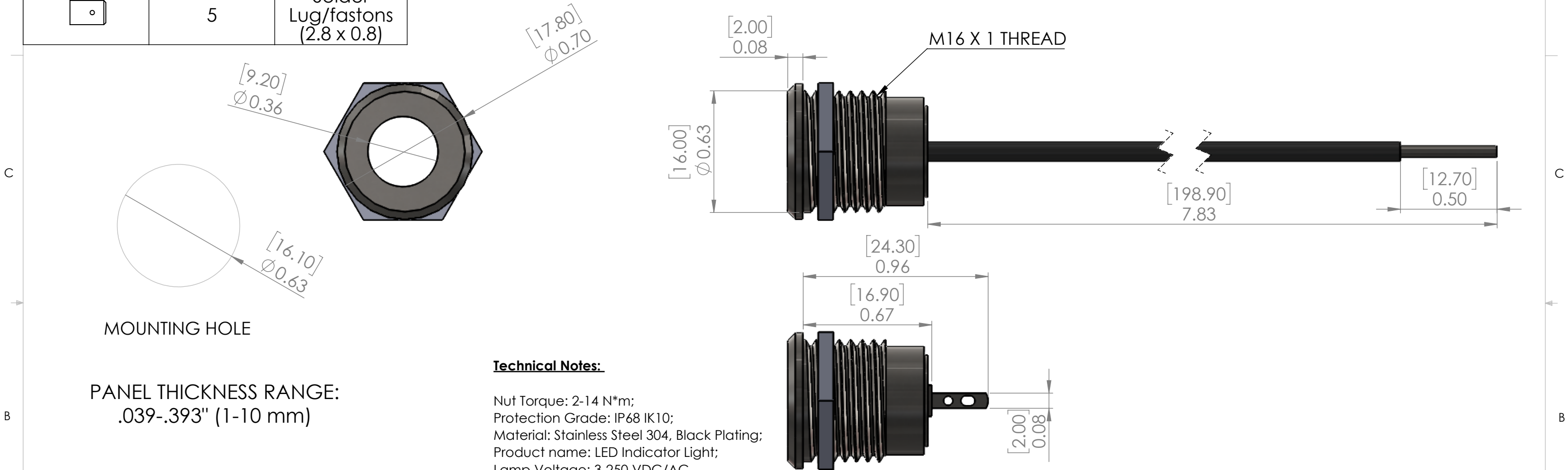
SORENSON LIGHTED CONTROLS, INC. 100 Shield Street - West Hartford, CT 06110					
TITLE CATALOG DRAWING					
SIZE B	DWG. NO. SERIES BR-12MM			REV B	
USED ON		2:1		SHEET 1 OF 1	

THIS DRAWING AND DIMENSIONS PROVIDED FOR REFERENCE ONLY.

DWG NO.	SERIES BR	REV. A
---------	-----------	-----------

TERMINATION		
Style	Code	Specifications
	1	Rear Apoxy Wire
	5	Solder Lug/fastons (2.8 x 0.8)

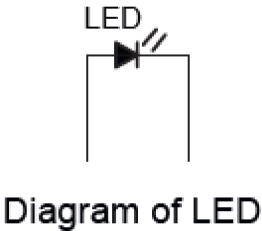
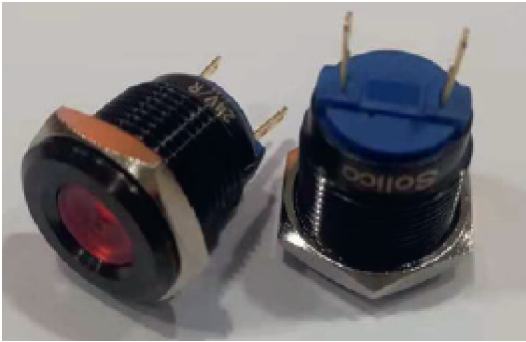
REV.	DESCRIPTION	DATE	APPROVED
A	INITIAL RELEASE	3/23/22	JAKE JANOSO
B	UPDATED DIMENSIONS AND PART INFO	5/4/22	JAKE JANOSO



PANEL THICKNESS RANGE:
.039-.393" (1-10 mm)

Technical Notes:

Nut Torque: 2-14 N*m;
Protection Grade: IP68 IK10;
Material: Stainless Steel 304, Black Plating;
Product name: LED Indicator Light;
Lamp Voltage: 3-250 VDC/AC
Rating: 20mA 250VDC MAX;
Dielectrical Life: more than 100,000 hours
Operating Temperature: -40 - 70°C/-40 - 70°F
Storage Temperature: -40 - 70°C/-40 - 70°F
Operating Humidity: 10-90%
Connection Type: Pin Connection;
Base Material: PA66
Certification: Compliance with ROHS requirement



*Mounting Hole Dimensions shown are TYPICAL.
Customer is responsible for determining
final size based on panel material and thickness

SOLICO PART NUMBER

PROPRIETARY NOTICE

NOTICE TO ALL PERSONS RECEIVING THIS
DRAWING, THIS DOCUMENT IS THE SOLE
PROPERTY OF SORENSON LIGHTED
CONTROLS, INC. AND IS NOT TO BE
DISCLOSED, REPRODUCED IN WHOLE OR
IN PART, OR USED FOR ANY
MANUFACTURING PURPOSES BY ANYONE
WITHOUT THE EXPRESS CONSENT OF
SORENSON LIGHTED CONTROLS, INC.

UNSPECIFIED TOLERANCES

FRAC. ±1/64 X.XXX ±0.005
X.XX ±0.01 ANGLES ±1°

PROJECTIONS



DIMENSIONS

IN (mm)

TOOL NO.

DRAWN

JAJ

DATE

3/23/22

CHECKED

DATE

APVD

DATE



SORENSON LIGHTED CONTROLS, INC.
100 Shield Street - West Hartford, CT 06110

TITLE
CATALOG DRAWING

SIZE

B

DWG. NO.

SERIES BR-16MM

REV

B

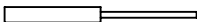

USED ON

2:1

SHEET 1 OF 1

THIS DRAWING AND DIMENSIONS PROVIDED FOR REFERENCE ONLY.

DWG NO.	SERIES BR	REV. A
---------	-----------	-----------

TERMINATION		
Style	Code	Specifications
	1	Rear Apoxy Wire
	5	Solder lug/fastons (2.8 x 0.8)

REV.	DESCRIPTION	DATE	APPROVED
A	INITIAL RELEASE	3/23/22	JAKE JANOSO
B	UPDATED DIMENSIONS AND PART INFO	5/4/22	JAKE JANOSO

D

D

C

C

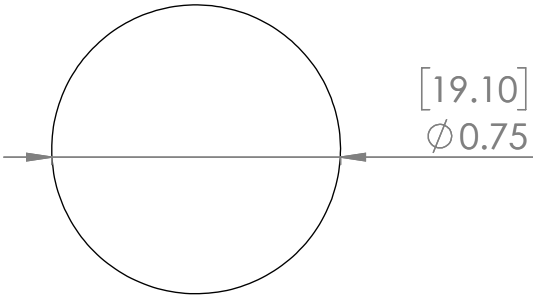
B

B

A

A

MOUNTING HOLE



PANEL THICKNESS RANGE:
.039-.393" (1-10 mm)

Technical Notes:

Nut Torque: 5-14 N*m;
Protection Grade: IP68 IK10;
Material: Stainless Steel 304, Black Plating;
Product name: LED Indicator Light;
Lamp Voltage: 3-250 VDC/AC
Rating: 20mA 250 VDC MAX;
Dielectrical Life: more than 100,000 hours
Operating Temperature: -40 - 70°C/-40 - 70°F
Storage Temperature: -40 - 70°C/-40 - 70°F
Operating Humidity: 10-90%
Connection Type: Socket;
Base Material: PC
Certification: Compliance with ROHS requirement

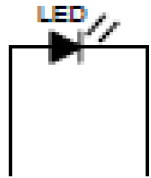
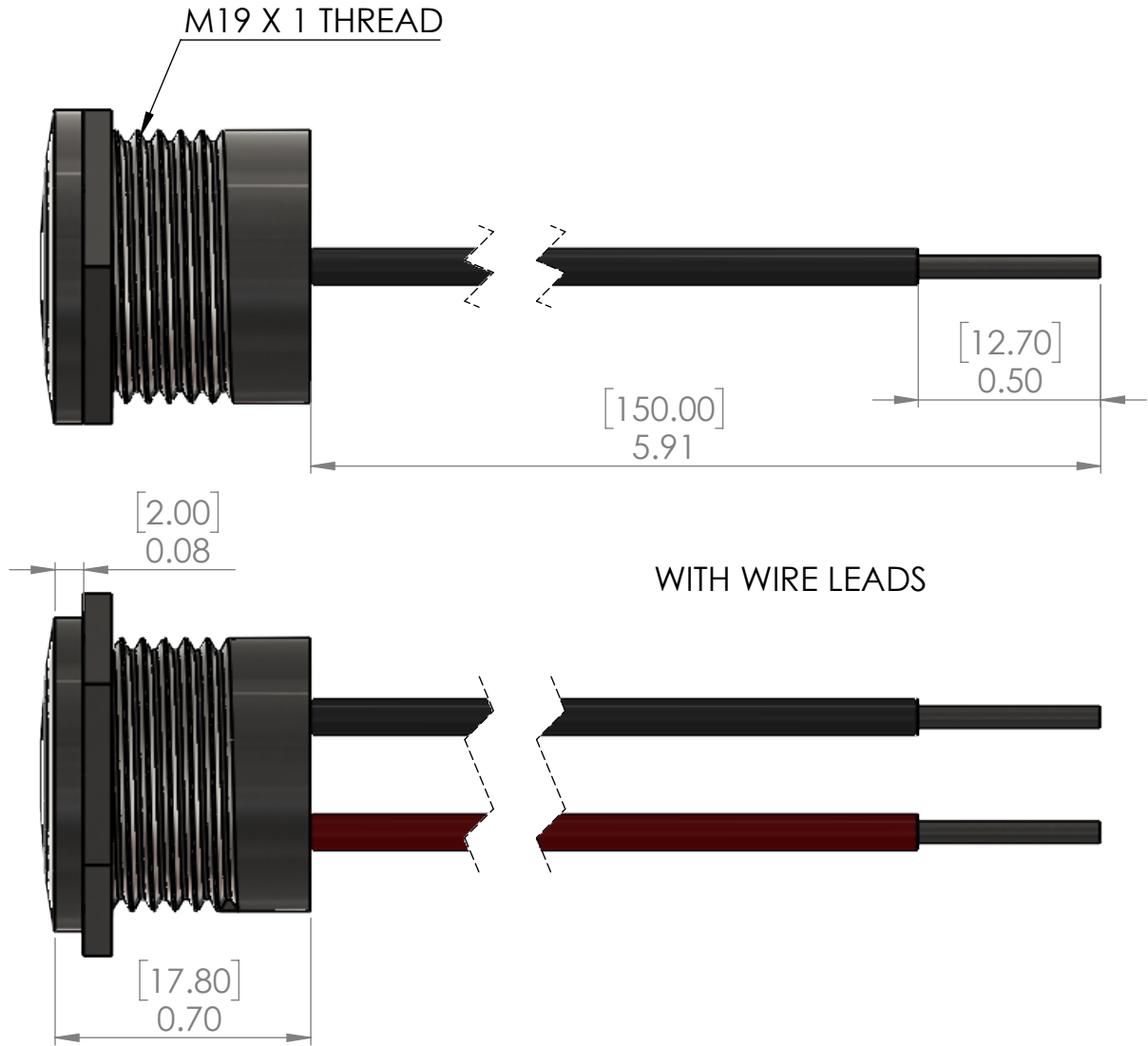
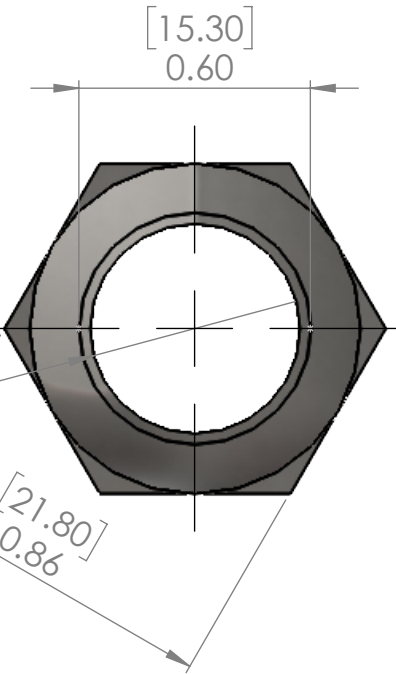


Diagram of LED



WITH WIRE LEADS

SOLICO PART NUMBER

*Mounting Hole Dimensions shown are TYPICAL.
Customer is responsible for determining
final size based on panel material and thickness

PROPRIETARY NOTICE
NOTICE TO ALL PERSONS RECEIVING THIS DRAWING, THIS DOCUMENT IS THE SOLE PROPERTY OF SORENSON LIGHTED CONTROLS, INC. AND IS NOT TO BE DISCLOSED, REPRODUCED IN WHOLE OR IN PART, OR USED FOR ANY MANUFACTURING PURPOSES BY ANYONE WITHOUT THE EXPRESS CONSENT OF SORENSON LIGHTED CONTROLS, INC.

UNSPECIFIED TOLERANCES

FRAC. ±1/64 X.XX ±0.01 X.XXX ±0.005 ANGLES ±1°

PROJECTIONS DIMENSIONS
IN (mm)

TOOL NO.

DRAWN JAJ DATE 3/23/22
CHECKED DATE
APVD DATE



SORENSON LIGHTED CONTROLS, INC.
100 Shield Street - West Hartford, CT 06110

TITLE CATALOG DRAWING

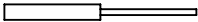

SIZE DWG. NO. REV
B SERIES BR-19MM **B**

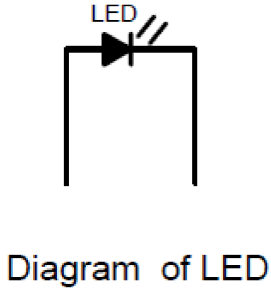
USED ON SHEET 1 OF 1

2:1

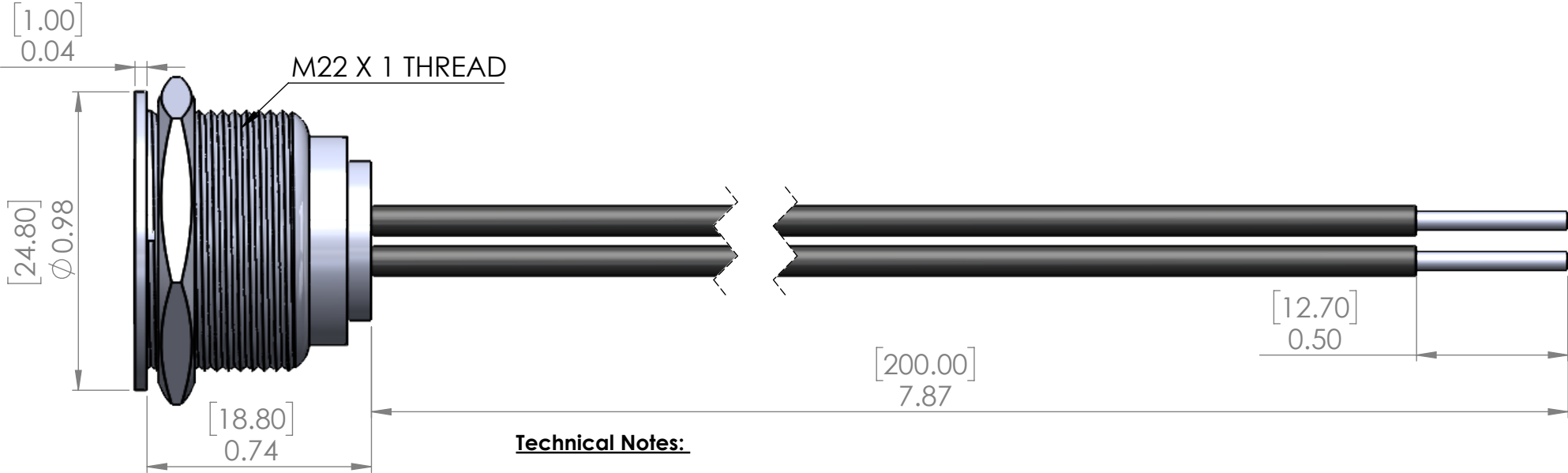
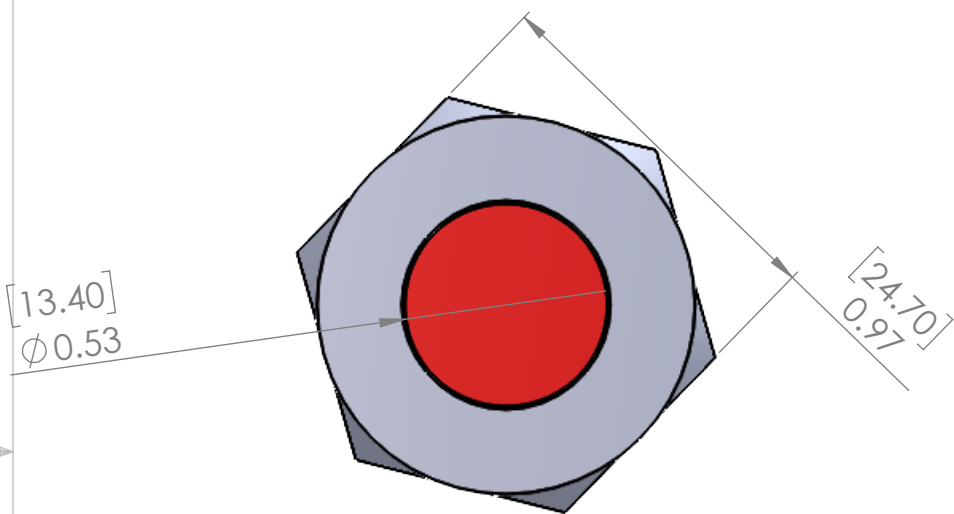
THIS DRAWING AND DIMENSIONS PROVIDED FOR REFERENCE ONLY.

DWG NO.	SERIES BR	REV.
		A

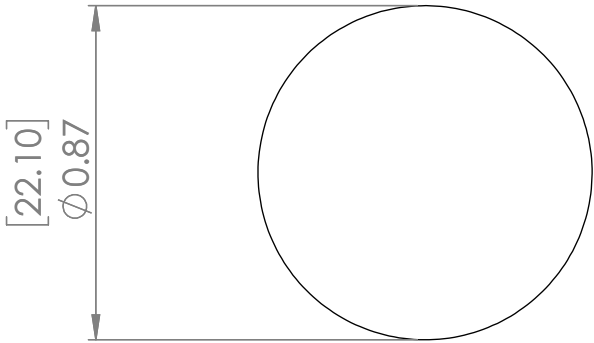
TERMINATION		
Style	Code	Specifications
	1	Rear Apoxy Wire
	5	Solder lug/fastons (2.8 x 0.8)



REV.	DESCRIPTION	DATE	APPROVED
A	INITIAL RELEASE	3/25/22	JAKE JANOSO



PANEL THICKNESS RANGE:
.039-.393" (1-10 mm)



MOUNTING HOLE

*Mounting Hole Dimensions shown are TYPICAL.
Customer is responsible for determining
final size based on panel material and thickness


Technical Notes:

- Nut Torque: 2-14 N*m;
- Protection Grade: IP68 IK10;
- Material: Stainless Steel 304, Black Plating;
- Product name: LED Indicator Light;
- Lamp Voltage: 3-250 VDC/AC
- Rating: 12 VDC MAX;
- Dielectrical Life: more than 100,000 hours
- Operating Temperature: -40 - 70°C/-40 - 70°F
- Storage Temperature: -40 - 70°C/-40 - 70°F
- Operating Humidity: 10-90%
- Connection Type: Cable;
- Base Material: PC
- Certification: Compliance with ROHS requirement



SORENSEN LIGHTED CONTROLS, INC.
100 Shield Street - West Hartford, CT 06110

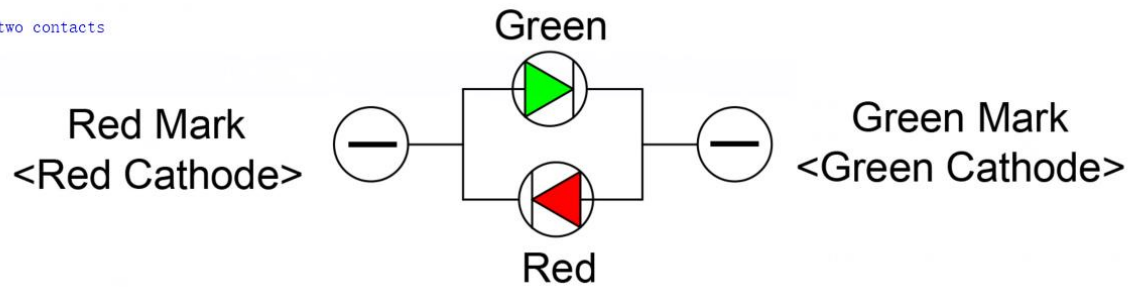
SOLICO PART NUMBER

PROPRIETARY NOTICE		UNSPECIFIED TOLERANCES		TOOL NO.	
NOTICE TO ALL PERSONS RECEIVING THIS DRAWING, THIS DOCUMENT IS THE SOLE PROPERTY OF SORENSON LIGHTED CONTROLS, INC. AND IS NOT TO BE DISCLOSED, REPRODUCED IN WHOLE OR IN PART, OR USED FOR ANY MANUFACTURING PURPOSES BY ANYONE WITHOUT THE EXPRESS CONSENT OF SORENSON LIGHTED CONTROLS, INC.		FRAC. ±1/64	X.XXX ±0.005	DRAWN	DATE
		X.XX ±0.01	ANGLES ±1°	JAJ	3/25/22
		PROJECTIONS	DIMENSIONS	CHECKED	DATE
			IN (mm)	APVD	DATE

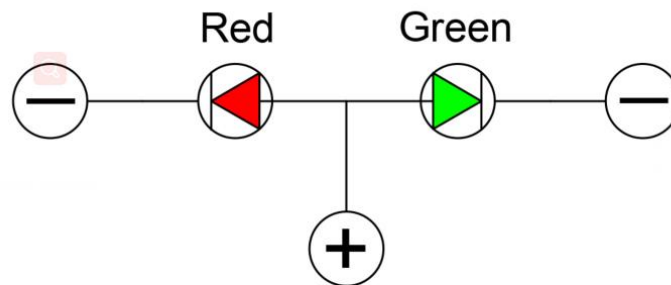
TITLE			
CATALOG DRAWING			
SIZE	DWG. NO.	REV	
B	SERIES BR-22MM	A	
USED ON		2:1	SHEET 1 OF 1

We can do the two-color light, generally red green, red blue, red yellow, but they come in two sizes, One is the two contact, through the current positive and negative polarity opposite, such as + -red light, - +green light;
The other is three contacts, one of the contacts is common, common + or -,and the other two are lamp pins.

two contacts



three contacts



Note:Common positive or common negative poles are allowed