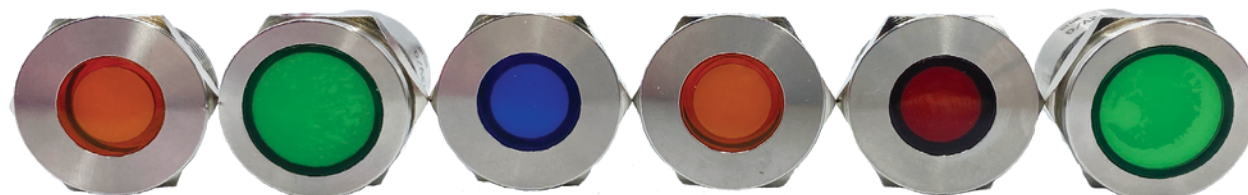


BR Series Metal Indicator Lights



Solico offers a range of BR Series Metal Indicator Lights with 8 / 10 / 12 / 16 / 19 / 22 mm mounting holes, a variety of voltages, LED color options, and fixed or Flashing LEDs.



The BR series is designed to offer an aesthetic quality and polished LED light output for a wide range of applications and markets. The threaded bushing indicator includes a hexagon nut and silicone seal to complement its rear epoxy sealed base. The LED is extremely durable due to its solid-state design and ability to withstand a wide temperature range. Solico LED lights reliably indicate the status of different components, reducing the need for maintenance while saving energy in your application.

Features include:

- Threaded Metal Housing • Corrosion and Impact Resistant • Multiple display function
- Imprinted Legends • IP 67 & IP 68, IK10 • Dual and Tri color options
- Voltage Rating: 5VDC - 110VAC • Epoxy Sealed terminations • LED's

BR Series Part Number System

Panel Mounting	Code	Voltage	Code	Termination	Code	Bezel Style	Code	Bezel Finish	Code
08 mm	0	12 VDC	1	Rear Epoxy Wire	1	Flushed	1	Bright Chrome	1
10 mm	8	24 VDC	2	Solder Lug / Fastons (2.8 x 0.8)	5	Recessed	2	Black	2
12 mm	1	125	2						
16 mm	0	VAC	4						
19 mm	1		1						
22 mm	2		5						
Lamp	Code	Lens Colors	Code	Lens Marking	Code	Legend Color	Code	4 Digit Numbering	
Fixed	6	Red	1	Not Applicable	0	Not Applicable	0	None	
	9	Green	4	Legend Imprint	A	White	1	0.0000 (example)	
Flashing	2	Blue	5			Black	2		
	2	White	6						
		Yellow	8						

Markets include:

- Transportation
- Emergency Vehicles
- Construction / Agriculture Equipment
- Appliance / Commercial Food
- Vacuums / Floor cleaners
- Vending Machines
- Environmental Controls
- Control Panels
- Factory Automation

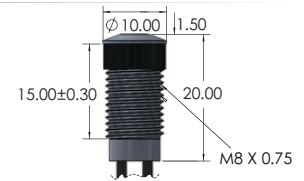
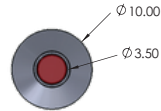
BR Series Indicator Light

Spec sheet

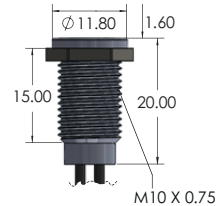
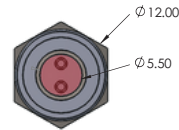
8 / 10 / 12 / 16 / 19 / 22 mm



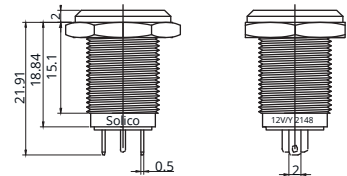
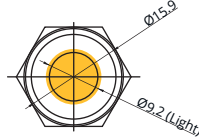
08 mm Panel Mount



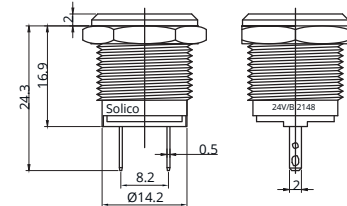
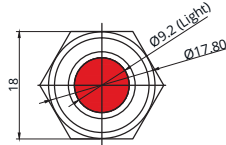
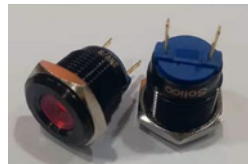
10 mm Panel Mount



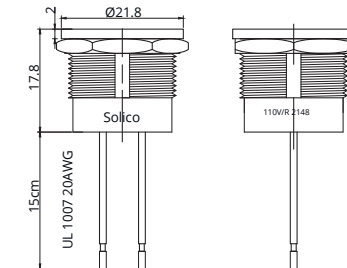
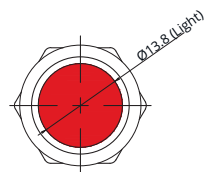
12 mm Panel Mount



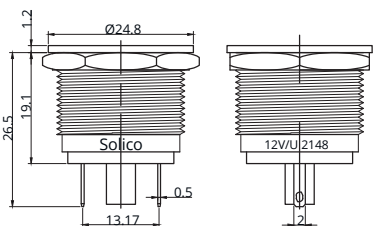
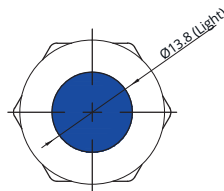
16 mm Panel Mount



19 mm Panel Mount



22 mm Panel Mount



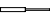
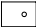
Additional information can be found on our website www.solico.com.

For a sample or quote email Solico at sales@solico.com or call us at 860-527-3092.

Sorenson Lighted Controls (Solico) continues its 50+ years history of producing a wide variety of indicator lights and offering value-added services for custom wire length with various connector options, legends, and custom diodes for reverse polarity.

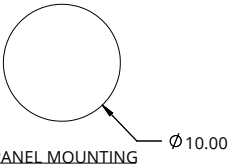
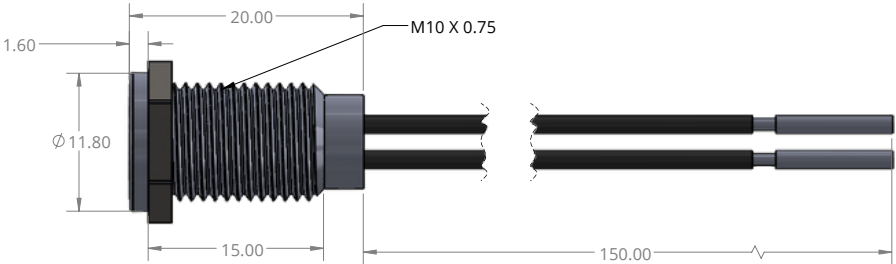
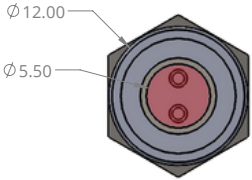
THIS DRAWING AND DIMENSIONS PROVIDED FOR REFERENCE ONLY.

$$A$$

TERMINATION		
Style	Code	Specifications
	1	Rear Apoxy Wire
	5	Solder lug/fastons (2.8 x 0.8)

THIS DRAWING AND DIMENSIONS PROVIDED FOR REFERENCE ONLY.

REVISIONS				
ZONE	REV.	DESCRIPTION	DATE	APPROVED
	A	INITIAL	2/22/2023	JAKE JANOSO
RELEASE				



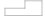
Circuit Diagram
Single Color



Technical Notes:
Lamp Voltage: 3-250VAC/DC
Rating: 20mA 250VDC;
Dielectrical Withstanding Voltage: 1100VAC For 1 Minute
Operating Life: 40,000 Hours
Function: Indicator Light;
Operating Temperature: -20 - 70C
Protection Grade: IP67 IK10;
Connection Type: Wire Harness

Material:
Base Material: EP
Lamp Shade Material: PC
Case Material: Stainless Steel

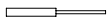
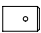
*Mounting Hole Dimensions shown are TYPICAL.
Customer is responsible for determining
final size based on panel material and thickness

PROPRIETARY NOTICE NOTICE TO ALL PERSONS RECEIVING THIS DRAWING. THIS DOCUMENT IS THE SOLE PROPERTY OF SORENSON LIGHTED CONTROLS, INC. AND IS NOT TO BE DISCLOSED, REPRODUCED IN WHOLE OR IN PART, OR USED FOR ANY MANUFACTURING PURPOSES BY ANYONE WITHOUT THE EXPRESS CONSENT OF SORENSON LIGHTED CONTROLS, INC.	UNSPECIFIED TOLERANCES FRA \varnothing . 1/64X.XXX 0.005 XX 0.01 ANGLES 1 \pm ° PROJECTIONS DIMENSIONS mm 	TOOL NO. DRAWN JAJ DATE 2/21/23 CHECKED DATE APVD DATE	TITLE CUSTOMER DRAWING SIZE B DWG. NO. BR SERIES-10 MM REV A USED ON SCALE 3:1 SHEET 1 OF 1
--	--	---	--

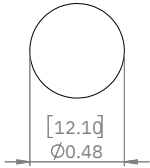


SORENSON LIGHTED CONTROLS, INC.
100 Shield Street - West Hartford, CT 06110

THIS DRAWING AND DIMENSIONS PROVIDED FOR REFERENCE ONLY.

TERMINATION		
Style	Code	Specifications
	1	Rear Apoxy Wire
	5	Solder lug/fastons (2.8 x 0.8)

MOUNTING HOLE



PANEL THICKNESS RANGE:
.039-.393" (1-10 mm)

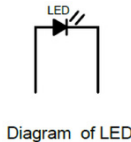
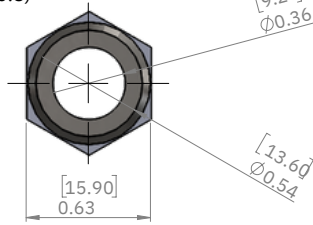


Diagram of LED

Technical Notes:

Nut Torque: 2-14 N*m;
Protection Grade: IP68 IK10;
Material: Stainless Steel 30;
Product name: LED Indicator Light;
Lamp Voltage: 3-250 VDC/AC
Rating: 20mA 250VDC MAX;
Dielectrical Life: more than 100,000 hours
Operating Temperature: -40 - 70C/-40 - 70F °
Storage Temperature: -40 - 70C/-40 - 70F °
Operating Humidity: 10-90%
Connection Type: Pin Connection;
Base Material: PA66
Certification: Compliance with ROHS requirement

SOLICO PART NUMBER

*Mounting Hole Dimensions shown are **TYPICAL**.
Customer is responsible for determining
final size based on panel material and thickness

PROPRIETARY NOTICE

NOTICE TO ALL PERSONS RECEIVING THIS
DRAWING, THIS DOCUMENT IS THE SOLE
PROPERTY OF SORENSON LIGHTED
CONTROLS, INC. AND IS NOT TO BE
DISCLOSED, REPRODUCED IN WHOLE OR
IN PART, OR USED FOR ANY
MANUFACTURING PURPOSES BY ANYONE
WITHOUT THE EXPRESS CONSENT OF
SORENSON LIGHTED CONTROLS, INC.

UNSPECIFIED TOLERANCES

FRAG: 1/64X.XXX 0.005
X.XX 0.01 ANGLES 1 ± °

PROJECTIONS DIMENSIONS

IN (mm)

TOOL NO.

DRAWN	JAJ	DATE	3/23/22
CHECKED		DATE	
APVD		DATE	



SORENSON LIGHTED CONTROLS, INC.
100 Shield Street - West Hartford, CT 06110

TITLE
CATALOG DRAWING

SIZE	DWG. NO.	REV
B	SERIES BR-12MM	B

USED ON 2:1 SHEET 1 OF 1

REV.	DESCRIPTION	DATE	APPROVED
A	INITIAL RELEASE	3/23/2	JAKE JANOSO
B	UPDATED DIMENSIONS AND PART INFO	2	JAKE JANOSO

5/4/22

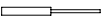
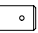
DWG NO.	SERIES BR	REV.
		A

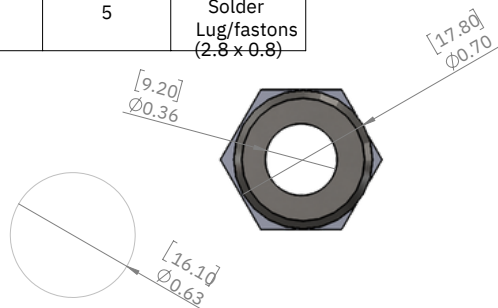
THIS DRAWING AND DIMENSIONS PROVIDED FOR REFERENCE ONLY.

DWG NO.	SERIES BR	REV.
		A

REV.	DESCRIPTION	DATE	APPROVED
A	INITIAL RELEASE	3/23/2	JAKE JANOSO
B	UPDATED DIMENSIONS AND PART INFO	2	JAKE JANOSO

5/4/22

TERMINATION		
Style	Code	Specifications
	1	Rear Apoxy Wire
	5	Solder Lug/fastons (2.8 x 0.8)



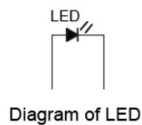
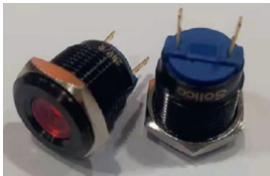
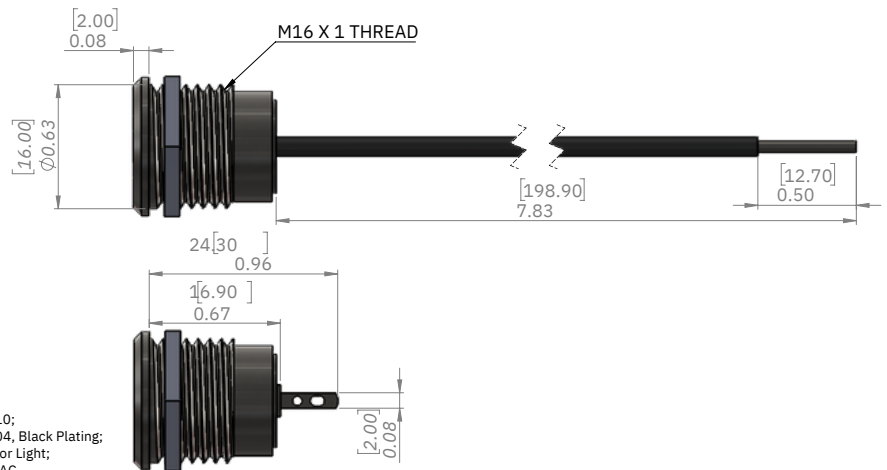
MOUNTING HOLE

PANEL THICKNESS RANGE:
.039-.393" (1-10 mm)

Technical Notes:

Nut Torque: 2-14 N*m;
Protection Grade: IP68 IK10;
Material: Stainless Steel 304, Black Plating;
Product name: LED Indicator Light;
Lamp Voltage: 3-250 VDC/AC
Rating: 20mA 250VDC MAX;
Dielectrical Life: more than 100,000 hours
Operating Temperature: -40 - 70°C/-40 - 70°F •
Storage Temperature: -40 - 70°C/-40 - 70°F •
Operating Humidity: 10-90%
Connection Type: Pin Connection;
Base Material: PA66
Certification: Compliance with ROHS requirement

SOLICO PART NUMBER



SORENSEN LIGHTED CONTROLS, INC.
100 Shield Street - West Hartford, CT 06110

*Mounting Hole Dimensions shown are **TYPICAL**.
Customer is responsible for determining
final size based on panel material and thickness

PROPRIETARY NOTICE

NOTICE TO ALL PERSONS RECEIVING THIS
DRAWING: THIS DOCUMENT IS THE SOLE
PROPERTY OF SORENSON LIGHTED
CONTROLS, INC. AND IS NOT TO BE
DISCLOSED, REPRODUCED IN WHOLE OR
IN PART, OR USED FOR ANY
MANUFACTURING PURPOSES BY ANYONE
WITHOUT THE EXPRESS CONSENT OF
SORENSEN LIGHTED CONTROLS, INC.

UNSPECIFIED TOLERANCES

FRACTION: 1/64X.XXX 0.005
XXX 0.01 ANGLES 1 ± °

PROJECTIONS DIMENSIONS

IN (mm)

TOOL NO.

DRAWN	JAJ	DATE	3/23/22
CHECKED		DATE	
APVD		DATE	

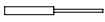
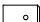
TITLE
CATALOG DRAWING

SIZE	DWG. NO.	REV
B	SERIES BR-16MM	B

USED ON
2:1
SHEET 1 OF 1

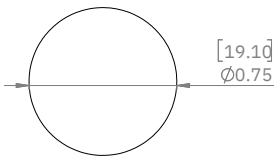
THIS DRAWING AND DIMENSIONS PROVIDED FOR REFERENCE ONLY.

DWG NO.	SERIES BR	REV.
		A

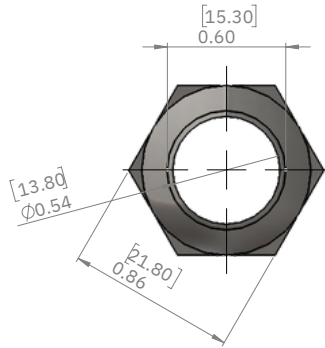
TERMINATION		
Style	Code	Specifications
	1	Rear Apoxy Wire
	5	Solder lug/fastons (2.8 x 0.8)

REV.	DESCRIPTION	DATE	APPROVED
A	INITIAL RELEASE	3/23/2	JAKE JANOSO
B	UPDATED DIMENSIONS AND PART INFO	5/4/22	JAKE JANOSO

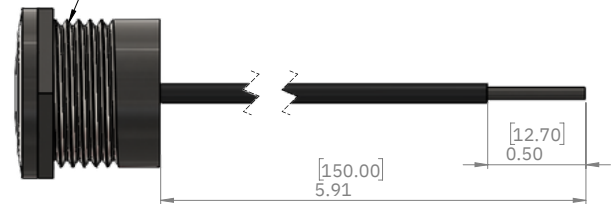
MOUNTING HOLE



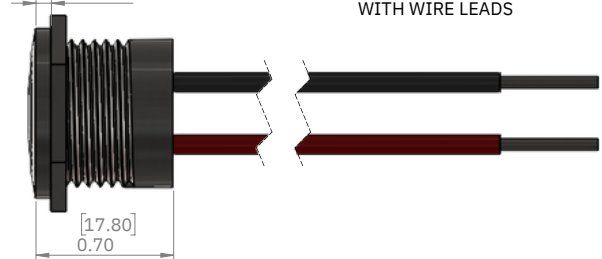
PANEL THICKNESS RANGE:
.039-.393" (1-10 mm)



M19 X 1 THREAD



WITH WIRE LEADS



Technical Notes:

Nut Torque: 5-14 N*m;
Protection Grade: IP68 IK10;
Material: Stainless Steel 304, Black Plating;
Product name: LED Indicator Light;
Lamp Voltage: 3-250 VDC/AC;
Rating: 20mA 250 VDC MAX;
Dielectrical Life: more than 100,000 hours
Operating Temperature: -40 - 70C/-40 - 70F •
Storage Temperature: -40 - 70C/-40 - 70F •
Operating Humidity: 10-90%
Connection Type: Socket;
Base Material: PC
Certification: Compliance with ROHS requirement



Diagram of LED



SORENSEN LIGHTED CONTROLS, INC.
100 Shield Street - West Hartford, CT 06110

*Mounting Hole Dimensions shown are TYPICAL.
Customer is responsible for determining
final size based on panel material and thickness

SOLICO PART NUMBER

PROPRIETARY NOTICE

NOTICE TO ALL PERSONS RECEIVING THIS
DRAWING: THIS DOCUMENT IS THE SOLE
PROPERTY OF SORENSON LIGHTED
CONTROLS, INC. AND IS NOT TO BE
DISCLOSED, REPRODUCED IN WHOLE OR
IN PART, OR USED FOR ANY
MANUFACTURING PURPOSES BY ANYONE
WITHOUT THE EXPRESS CONSENT OF
SORENSON LIGHTED CONTROLS, INC.

UNSPECIFIED TOLERANCES

FRACTION: 1/64X.XXX 0.005
X.XX 0.01 ANGLES 1 ± °

PROJECTIONS DIMENSIONS

IN (mm)

TOOL NO.

DRAWN	JAJ	DATE	3/23/22
CHECKED		DATE	
APVD		DATE	

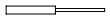
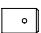
TITLE

CATALOG DRAWING

SIZE	DWG. NO.	REV
B	SERIES BR-19MM	B

USED ON SHEET 1 OF 1

THIS DRAWING AND DIMENSIONS PROVIDED FOR REFERENCE ONLY.

TERMINATION		
Style	Code	Specifications
	1	Rear Apoxy Wire
	5	Solder lug/fastons (2.8 x 0.8)

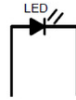
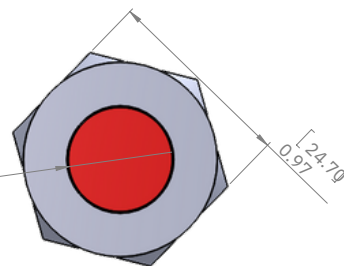


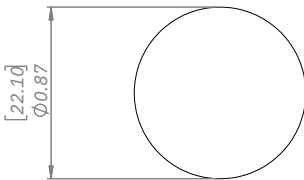
Diagram of LED

REV.	DESCRIPTION	DATE	APPROVED
A	INITIAL RELEASE	3/25/22	JAKE JANOSO

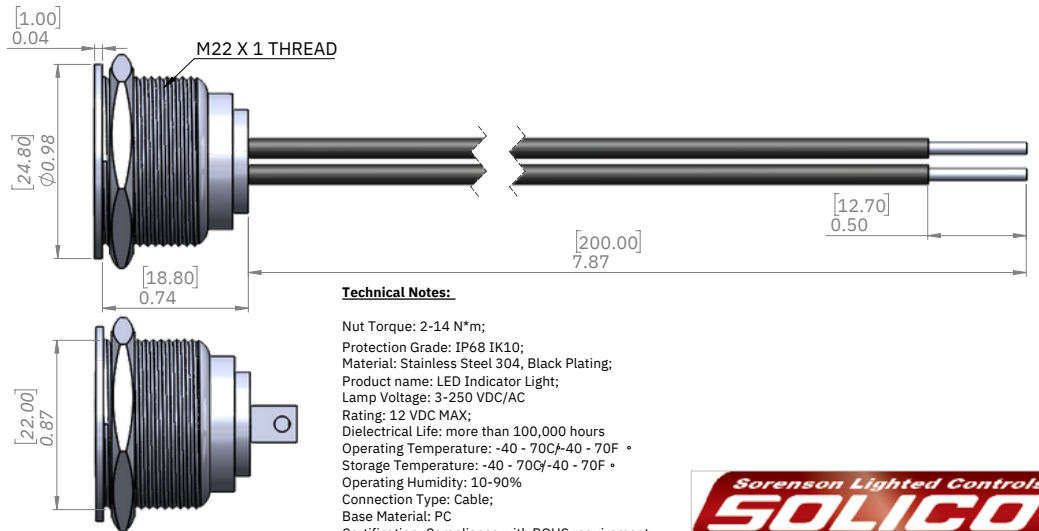
DWG NO.	SERIES BR	REV.
		A



PANEL THICKNESS RANGE:
.039-.393" (1-10 mm)



MOUNTING HOLE



SOLICO PART NUMBER

PROPRIETARY NOTICE

NOTICE TO ALL PERSONS RECEIVING THIS DRAWING, THIS DOCUMENT IS THE SOLE PROPERTY OF SORENSON LIGHTED CONTROLS, INC. AND IS NOT TO BE DISCLOSED, REPRODUCED IN WHOLE OR IN PART, OR USED FOR ANY MANUFACTURING PURPOSES BY ANYONE WITHOUT THE EXPRESS CONSENT OF SORENSON LIGHTED CONTROLS, INC.

UNSPECIFIED TOLERANCES

FRAG. 1/64X.XXX 0.005

X₆XX 0.01 ANGLES 1 ± •

PROJECTIONS DIMENSIONS

IN (mm)

TOOL NO.

DRAWN

JAJ

DATE

3/25/22

CHECKED

DATE

APVD

DATE



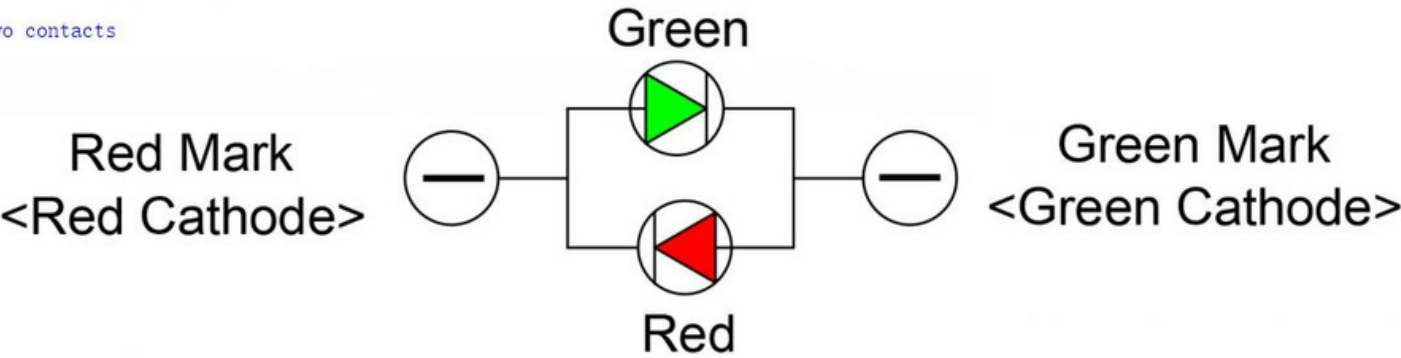
SORENSON LIGHTED CONTROLS, INC.
100 Shield Street - West Hartford, CT 06110

TITLE			
CATALOG DRAWING			
SIZE	DWG. NO.	REV	
B	SERIES BR-22MM	A	
USED ON	SHEET 1 OF 1		

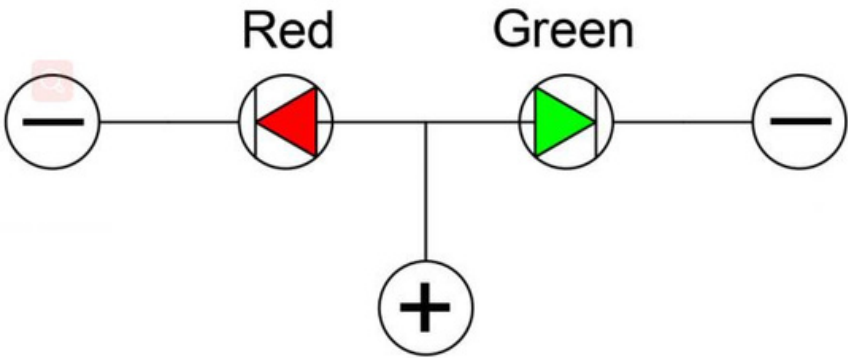
*Mounting Hole Dimensions shown are TYPICAL.
Customer is responsible for determining final size based on panel material and thickness

We can do the two-color light, generally red green, red blue, red yellow, but they come in two sizes, One is the two contact, through the current positive and negative polarity opposite, such as + -red light, - +green light;
The other is three contacts, one of the contacts is common, common + or -,and the other two are lamp pins.

two contacts



three contacts



Note:Common positive or common negative poles are allowed