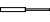
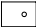


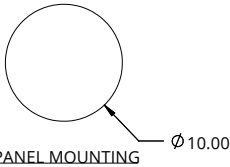
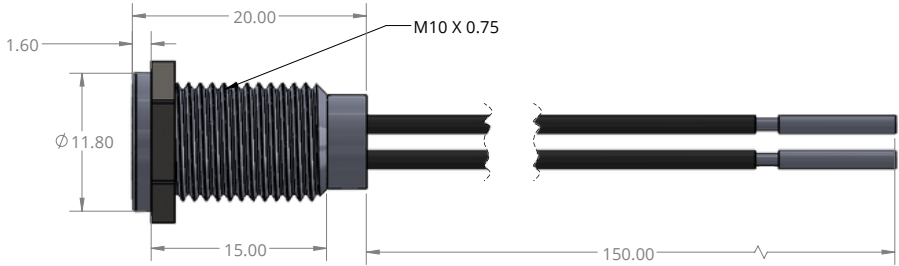
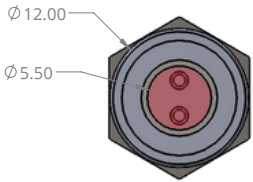
THIS DRAWING AND DIMENSIONS PROVIDED FOR REFERENCE ONLY.

A horizontal number line is shown with tick marks at 0, 1, 2, 3, and 4. A point is marked at 3.1, which is slightly to the right of the tick mark for 3.

TERMINATION		
Style	Code	Specifications
	1	Rear Apoxy Wire
	5	Solder lug/fastons (2.8 x 0.8)

THIS DRAWING AND DIMENSIONS PROVIDED FOR REFERENCE ONLY.

REVISIONS				
ZONE	REV.	DESCRIPTION	DATE	APPROVED
	A	INITIAL	2/22/2023	JAKE JANOSO
RELEASE				



Circuit Diagram  
Single Color




Technical Notes:

Lamp Voltage: 3-250VAC/DC  
Rating: 20mA 250VDC;  
Dielectrical Withstanding Voltage: 1100VAC For 1 Minute  
Operating Life: 40,000 Hours  
Function: Indicator Light;  
Operating Temperature: -20 - 70C  
Protection Grade: IP67 IK10;  
Connection Type: Wire Harness

Material:

Base Material: EP  
Lamp Shade Material: PC  
Case Material: Stainless Steel

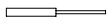
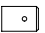
\*Mounting Hole Dimensions shown are TYPICAL.  
Customer is responsible for determining  
final size based on panel material and thickness

<b>PROPRIETARY NOTICE</b> NOTICE TO ALL PERSONS RECEIVING THIS DRAWING. THIS DOCUMENT IS THE SOLE PROPERTY OF SORENSON LIGHTED CONTROLS, INC. AND IS NOT TO BE DISCLOSED, REPRODUCED IN WHOLE OR IN PART, OR USED FOR ANY MANUFACTURING PURPOSES BY ANYONE WITHOUT THE EXPRESS CONSENT OF SORENSON LIGHTED CONTROLS, INC.	<b>UNSPECIFIED TOLERANCES</b> FRA $\varnothing$ . 1/64X.XXX 0.005 XX 0.01ANGLES 1 $\pm$ ° PROJECTIONS DIMENSIONS 	TOOL NO. DRAWN JAJ CHECKED APVD DATE 2/21/23 DATE	TITLE CUSTOMER DRAWING SIZE B USED ON DWG. NO. BR SERIES-10 MM SCALE 3:1 REV A SHEET 1 OF 1
--	--	--	--

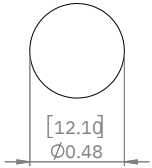


SORENSON LIGHTED CONTROLS, INC.  
100 Shield Street - West Hartford, CT 06110

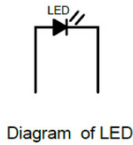
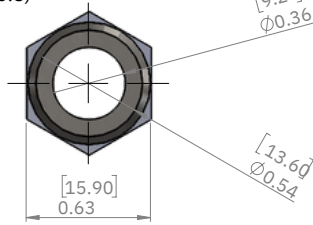
THIS DRAWING AND DIMENSIONS PROVIDED FOR REFERENCE ONLY.

TERMINATION		
Style	Code	Specifications
	1	Rear Apoxy Wire
	5	Solder lug/fastons (2.8 x 0.8)

MOUNTING HOLE



PANEL THICKNESS RANGE:  
.039-.393" (1-10 mm)



**Technical Notes:**

Nut Torque: 2-14 N\*m;  
Protection Grade: IP68 IK10;  
Material: Stainless Steel 30;  
Product name: LED Indicator Light;  
Lamp Voltage: 3-250 VDC/AC  
Rating: 20mA 250VDC MAX;  
Dielectrical Life: more than 100,000 hours  
Operating Temperature: -40 - 70C/-40 - 70F °  
Storage Temperature: -40 - 70C/-40 - 70F °  
Operating Humidity: 10-90%  
Connection Type: Pin Connection;  
Base Material: PA66  
Certification: Compliance with ROHS requirement

SOLICO PART NUMBER

\*Mounting Hole Dimensions shown are **TYPICAL**.  
Customer is responsible for determining  
final size based on panel material and thickness

**PROPRIETARY NOTICE**

NOTICE TO ALL PERSONS RECEIVING THIS  
DRAWING, THIS DOCUMENT IS THE SOLE  
PROPERTY OF SORENSON LIGHTED  
CONTROLS, INC. AND IS NOT TO BE  
DISCLOSED, REPRODUCED IN WHOLE OR  
IN PART, OR USED FOR ANY  
MANUFACTURING PURPOSES BY ANYONE  
WITHOUT THE EXPRESS CONSENT OF  
SORENSON LIGHTED CONTROLS, INC.

**UNSPECIFIED TOLERANCES**

FRAG: 1/64X.XXX 0.005  
XX 0.01 ANGLES 1 ± °

**PROJECTIONS DIMENSIONS**

IN (mm)

**TOOL NO.**

DRAWN

DATE

CHECKED

DATE

APVD

DATE



SORENSON LIGHTED CONTROLS, INC.  
100 Shield Street - West Hartford, CT 06110

TITLE  
**CATALOG DRAWING**

SIZE **B** DWG. NO. **SERIES BR-12MM** REV **B**

USED ON 2:1 SHEET 1 OF 1

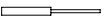
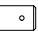
REV.	DESCRIPTION	DATE	APPROVED
A	INITIAL RELEASE	3/23/2	JAKE JANOSO
B	UPDATED DIMENSIONS AND PART INFO	2	JAKE JANOSO

5/4/22

DWG NO.	SERIES BR	REV.
		A

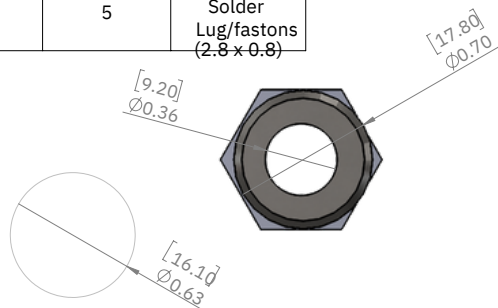
THIS DRAWING AND DIMENSIONS PROVIDED FOR REFERENCE ONLY.

DWG NO.	SERIES BR	REV.
		A

TERMINATION		
Style	Code	Specifications
	1	Rear Apoxy Wire
	5	Solder Lug/fastons (2.8 x 0.8)

REV.	DESCRIPTION	DATE	APPROVED
A	INITIAL RELEASE	3/23/2	JAKE JANOSO
B	UPDATED DIMENSIONS AND PART INFO	2	JAKE JANOSO

5/4/22



MOUNTING HOLE

PANEL THICKNESS RANGE:  
.039-.393" (1-10 mm)

#### Technical Notes:

Nut Torque: 2-14 N\*m;  
Protection Grade: IP68 IK10;  
Material: Stainless Steel 304, Black Plating;  
Product name: LED Indicator Light;  
Lamp Voltage: 3-250 VDC/AC  
Rating: 20mA 250VDC MAX;  
Dielectrical Life: more than 100,000 hours  
Operating Temperature: -40 - 70°C/-40 - 70°F °  
Storage Temperature: -40 - 70°C/-40 - 70°F °  
Operating Humidity: 10-90%  
Connection Type: Pin Connection;  
Base Material: PA66  
Certification: Compliance with ROHS requirement

SOLICO PART NUMBER

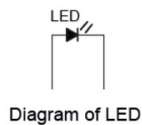
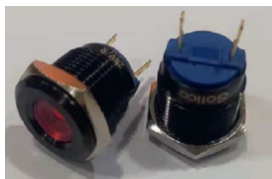
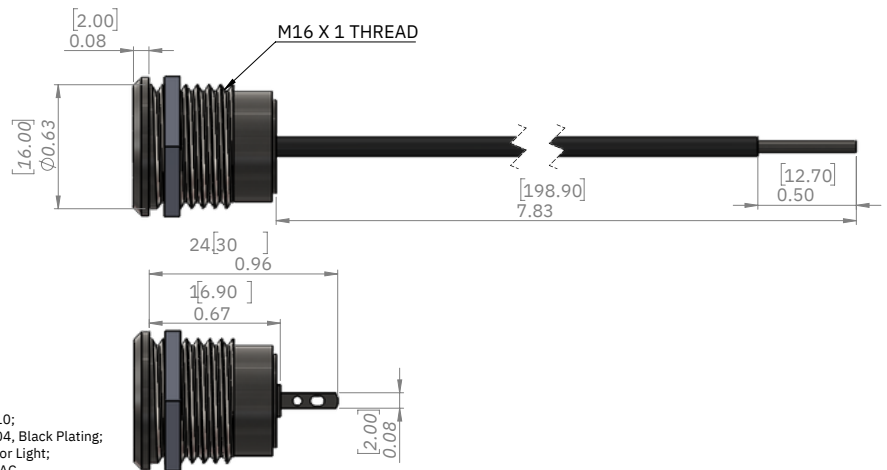


Diagram of LED



SORENSEN LIGHTED CONTROLS, INC.  
100 Shield Street - West Hartford, CT 06110

\*Mounting Hole Dimensions shown are **TYPICAL**.  
Customer is responsible for determining  
final size based on panel material and thickness

#### PROPRIETARY NOTICE

NOTICE TO ALL PERSONS RECEIVING THIS  
DRAWING: THIS DOCUMENT IS THE SOLE  
PROPERTY OF SORENSON LIGHTED  
CONTROLS, INC. AND IS NOT TO BE  
DISCLOSED, REPRODUCED IN WHOLE OR  
IN PART, OR USED FOR ANY  
MANUFACTURING PURPOSES BY ANYONE  
WITHOUT THE EXPRESS CONSENT OF  
SORENSON LIGHTED CONTROLS, INC.

#### UNSPECIFIED TOLERANCES

FRACTION: 1/64X.XXX 0.005  
XXX 0.01 ANGLES 1 ± °

#### PROJECTIONS DIMENSIONS

IN (mm)

#### TOOL NO.

DRAWN	JAJ	DATE	3/23/22
CHECKED		DATE	
APVD		DATE	

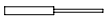
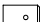
TITLE  
CATALOG DRAWING

SIZE	DWG. NO.	REV
B	SERIES BR-16MM	B

USED ON  
2:1  
SHEET 1 OF 1

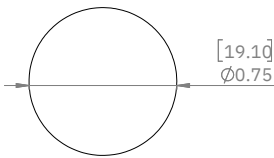
THIS DRAWING AND DIMENSIONS PROVIDED FOR REFERENCE ONLY.

DWG NO.	SERIES BR	REV.
		A

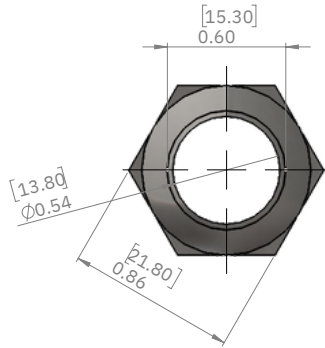
TERMINATION		
Style	Code	Specifications
	1	Rear Apoxy Wire
	5	Solder lug/fastons (2.8 x 0.8)

REV.	DESCRIPTION	DATE	APPROVED
A	INITIAL RELEASE	3/23/2	JAKE JANOSO
B	UPDATED DIMENSIONS AND PART INFO	5/4/22	JAKE JANOSO

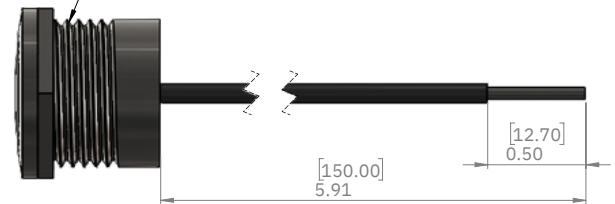
#### MOUNTING HOLE



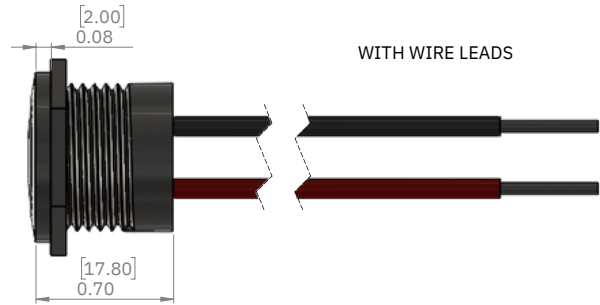
PANEL THICKNESS RANGE:  
.039-.393" (1-10 mm)



#### M19 X 1 THREAD



#### WITH WIRE LEADS



#### Technical Notes:

Nut Torque: 5-14 N\*m;  
Protection Grade: IP68 IK10;  
Material: Stainless Steel 304, Black Plating;  
Product name: LED Indicator Light;  
Lamp Voltage: 3-250 VDC/AC;  
Rating: 20mA 250 VDC MAX;  
Dielectrical Life: more than 100,000 hours  
Operating Temperature: -40 - 70C/-40 - 70F •  
Storage Temperature: -40 - 70C/-40 - 70F •  
Operating Humidity: 10-90%  
Connection Type: Socket;  
Base Material: PC  
Certification: Compliance with ROHS requirement



Diagram of LED



SORENSEN LIGHTED CONTROLS, INC.  
100 Shield Street - West Hartford, CT 06110

\*Mounting Hole Dimensions shown are TYPICAL.  
Customer is responsible for determining  
final size based on panel material and thickness

SOLICO PART NUMBER

#### PROPRIETARY NOTICE

NOTICE TO ALL PERSONS RECEIVING THIS  
DRAWING: THIS DOCUMENT IS THE SOLE  
PROPERTY OF SORENSON LIGHTED  
CONTROLS, INC. AND IS NOT TO BE  
DISCLOSED, REPRODUCED IN WHOLE OR  
IN PART, OR USED FOR ANY  
MANUFACTURING PURPOSES BY ANYONE  
WITHOUT THE EXPRESS CONSENT OF  
SORENSON LIGHTED CONTROLS, INC.

#### UNSPECIFIED TOLERANCES

FRACTION: 1/64X.XXX 0.005  
X.XX 0.01 ANGLES 1 ± °

#### PROJECTIONS DIMENSIONS

IN (mm)

#### TOOL NO.

DRAWN	JAJ	DATE	3/23/22
CHECKED		DATE	
APVD		DATE	



#### TITLE

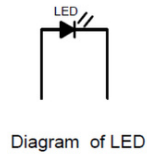
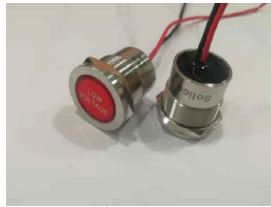
CATALOG DRAWING

SIZE	DWG. NO.	REV
B	SERIES BR-19MM	B

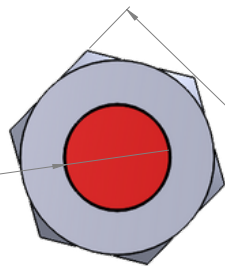
USED ON SHEET 1 OF 1

DWG NO.	SERIES BR	REV.
		A

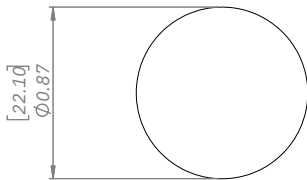
TERMINATION		
Style	Code	Specifications
	1	Rear Apoxy Wire
	5	Solder lug/tafastons (2.8 x 0.8)



REV.	DESCRIPTION	DATE	APPROVED
A	INITIAL RELEASE	3/25/22	JAKE JANOSO

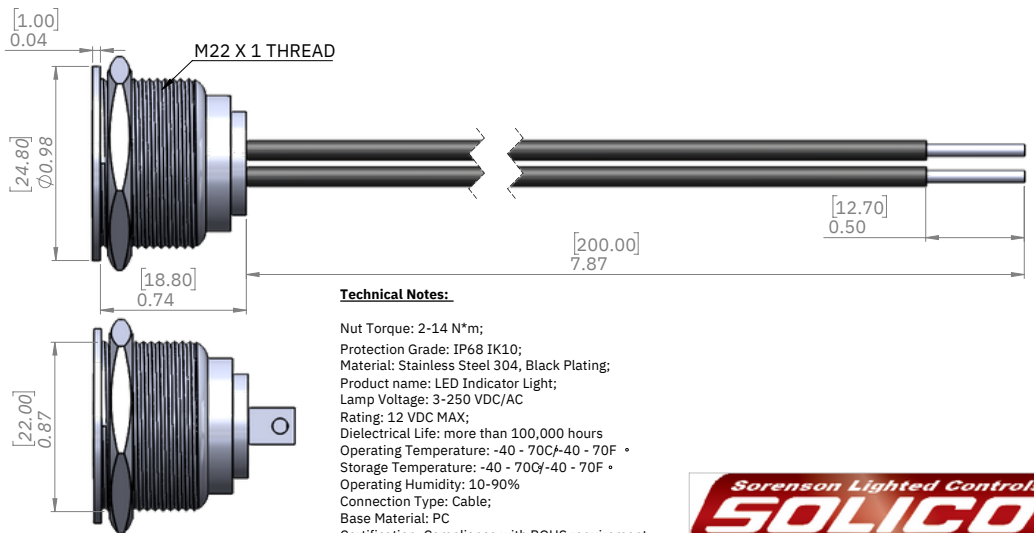


PANEL THICKNESS RANGE:  
.039-.393" (1-10 mm)



MOUNTING HOLE

\*Mounting Hole Dimensions shown are TYPICAL.  
Customer is responsible for determining  
final size based on panel material and thickness



### Technical Notes:

Nut Torque: 2-14 N\*mm;  
Protection Grade: IP68 IK10;  
Material: Stainless Steel 304, Black Plating;  
Product name: LED Indicator Light;  
Lamp Voltage: 3-250 VDC/AC  
Rating: 12 VDC MAX;  
Dielectrical Life: more than 100,000 hours  
Operating Temperature: -40 ~ 70C/-40 ~ 70F °  
Storage Temperature: -40 ~ 70C/-40 ~ 70F °  
Operating Humidity: 10-90%  
Connection Type: Cable;  
Base Material: PC  
Certification: Compliance with ROHS requirement



**SORENSEN LIGHTED CONTROLS, INC.**  
100 Shield Street - West Hartford, CT 06110

TITLE	CATALOG DRAWING
-------	-----------------

SIZE <b>B</b>	DWG. NO. <b>SERIES BR-22MM</b>	REV <b>A</b>
USED ON		SHEET 1 OF 1

SOLICO PART NUMBER

**PROPRIETARY NOTICE**

NOTICE TO ALL PERSONS RECEIVING THIS  
DRAWING. THIS DOCUMENT IS THE SOLE  
PROPERTY OF SORENSON LIGHTED  
CONTROLS, INC. AND IS NOT TO BE  
DISCLOSED, REPRODUCED IN WHOLE OR  
IN PART, OR USED FOR ANY  
MANUFACTURING PURPOSES BY ANYONE  
WITHOUT THE EXPRESS CONSENT OF  
SORENSON LIGHTED CONTROLS, INC.

### UNSPECIFIED TOLERANCES

FRAQ 1/64X.XXX 0.005

PROJECTIONS DIMENSIONS

IN (mm)

TOOL NO.	
----------	--

DRAWN	DATE
101	3/25/22

CHECKED	DATE
---------	------

APVD	DATE
------	------

TITLE
-------

SIZE  
B

USED ON

DWG. NO.	
----------	--

SERIES BR-22MM

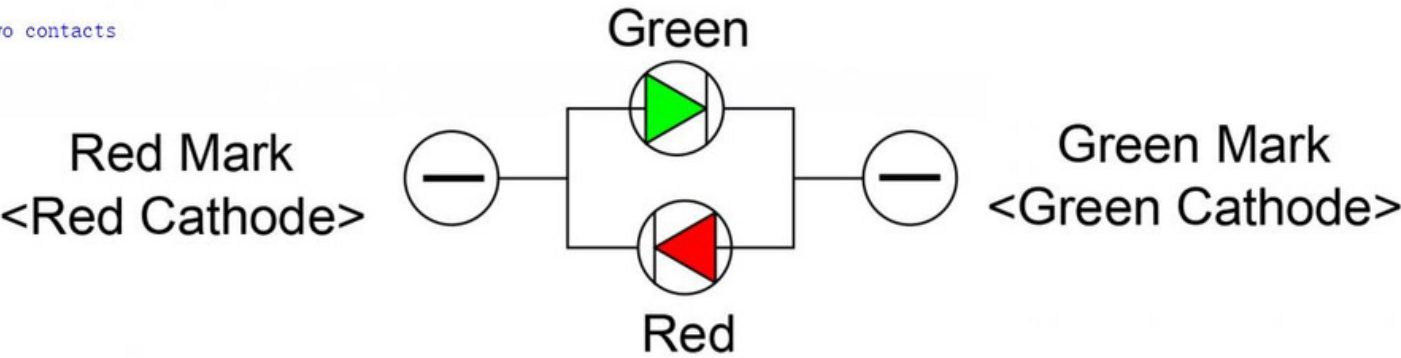
EV  
A

SHEET 1 OF 1

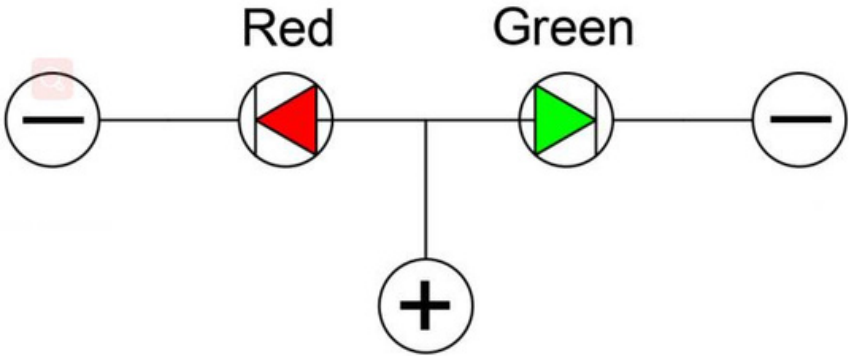
---

We can do the two-color light, generally red green, red blue, red yellow, but they come in two sizes, One is the two contact, through the current positive and negative polarity opposite, such as + -red light, - +green light;  
The other is three contacts, one of the contacts is common, common + or -,and the other two are lamp pins.

two contacts



three contacts



Note:Common positive or common negative poles are allowed