

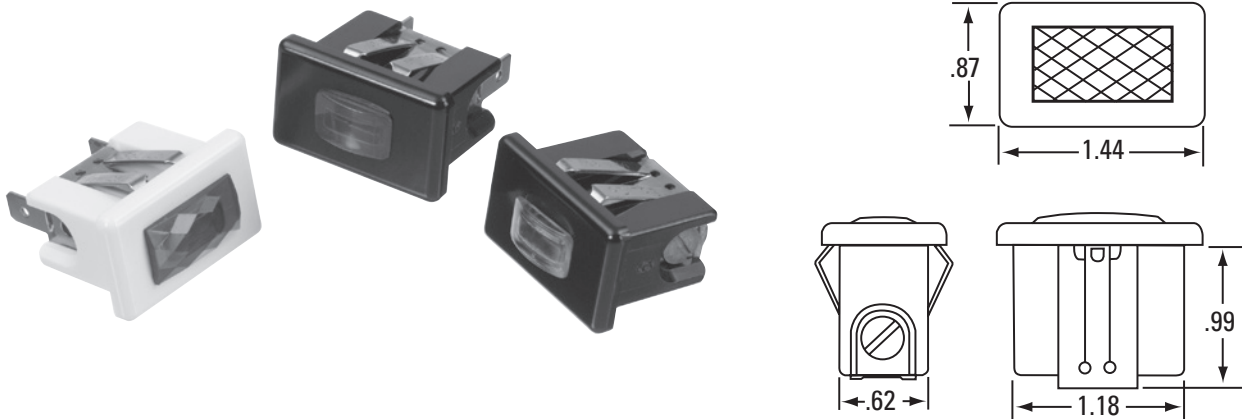
# Series 13

## Features

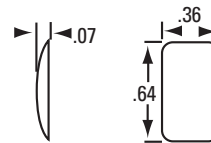
- Snap fits into 1.200" x .640" panel cutout
- Incandescent and neon illumination
- Two lens styles available
- Suggested for High Temperature applications
- Two termination styles available

## Specifications

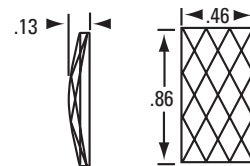
- Body Material: Phenolic
- Lens Material: Polycarbonate
- Panel Thickness: .045 to .065
- Certifications: Contact Us



Series		Lamp		Termination		Base		Bezel		Lens			
XX		XX		X		X		X		XXX		X 0	
	Voltage	Type	Code	Style	Code	Color	Code	Finish	Code	Style	Code	Color	Code
13	6	INCAND	32	.250 Tabs	4	White	1	None	0	Standard Plain	102	Red	1
	14	INCAND	35	Screws	6	Black	2			Faceted Plain	112	Amber	2
	28	INCAND	39									Clear	3
	125	NEON	50									Green	4
	250	NEON	52									Blue	5
		Custom	XX										

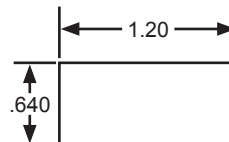


10 Standard Lens



11 Faceted Lens

### Panel Cutout



**Additional Options Available:**  
Contact [sales@solico.com](mailto:sales@solico.com)